

PALACKÝ UNIVERSITY
FACULTY OF SCIENCE
DEPARTMENT OF GEOGRAPHY
INTERNATIONAL DEVELOPMENT STUDIES

Bc.Eveline A.V. Jeomba

THE BROAD ISSUE OF INFORMAL SETTLEMENTS –
CASE OF NAMIBIA (WINDHOEK)

MASTER THESIS

SUPERVISOR: Doc. RNDr. Pavel NOVÁČEK, CSc.

OLOMOUC 2008

Gratitude:

I wish to express my gratitude to the City of Windhoek of providing me the necessary document to make this work possible. Thanks also go to the Ministry of Regional Local Government and Housing and Housing, and the Namibian Shacks Dwellers Federation.

I declare that I wrote this thesis myself, and all information obtained from others works has been acknowledged in this work.

Olomouce 2008

.....

Signature

Hand out of graduation theses

Student

Eveline A.V. JEOMBA
International Development Studies

Abstract work

The broad issue of Informal Settlements - case of Namibia
(Windhoek)

The framework of theses

The aim of my theses is to work out the issues around the informal settlements in Namibia, with special attention given to City of Windhoek through available material and information obtained during my fieldwork in Namibia.

The structure of work:

1. Introduction
2. defining the theme and methodology
3. Informal Settlement- definition, inception and courses of inception
4. General information on informal Settlements in Namibia
(Windhoek)
5. Life in the rural area vs. life in the informal settlement with in the urban area,
migration from villages to cities
6. Implications of life with in informal settlement(hygiene, unemployment, crime)
7. Access to public facilities
8. Current government programs and international organizations
9. Potential change (suggestions)
10. Conclusion
11. resume (in English)

Theses shall be worked during this given phases:

- a) Formulating theme, methodology, studding sources: October 06 - June 07
- b) Fieldwork - the case Informal Settlements in Namibia: July 07 September 07
- c) Working out the outcomes of the fieldwork: October 07- December 07
- d) Formulation of the outcomes, writing: January 08 – March 08

Extent of graphic work: 70 – 80 pages, graphs in accordance with need.

Extent of guiding work: 20000 words in basic text + all work and supplements in electronic form.

List of sources:

- DAVIS, M. *Planet of Slums*. London and New York: Verso, 2006.
- RAKONDI, C., LLOYD-JONES T. *Urban Livelihoods: A People-centred Approach to Reducing Poverty*. London: Earthscan, 2002.
- UN-HABITAT, *The Challenge of Slums: Global Report on human Settlements 2003*. London: Earthscan, 2003.
- Namibia, Rep. of. 2000. *2nd Development Plan*. Windhoek: National Planning Commission. (electronic data files).

- http://www.capegateway.gov.za/english/publications/guidelines_manuals_and_instructions/I/10448

Note: The rest of sources will be listed during the course of work

Acting supervisor: Doc. RNDr. Pavel Nováček, CSc.

The hand out date: 15. 11.2006

To be submitted: April 2008

Head of department

Supervisor

List of Abbreviations

CBS	Central Burrow of Statistics in Namibia
CDD	Community Development Division
CoW	City of Windhoek (Municipality of Windhoek)
CUP	City Upgrading Project
GDP	Gross Domestic Product
DECD	Department of Economy and Community Development
DUS	Development Upgrading Strategy
EGM	Expert Groups Meeting
FAO	Food and Agriculture Organization
GTZ	German Agency for Technical Cooperation
GRN	Government of Republic of Namibia
HIV/AIDS	Human Immunodeficiency Virus
IMF	International Monetary Fund
MDG	Millennium Development Goals
MRLGHRD	Ministry of Regional Local Government, Housing and Rural Development
NDP II	Second National Development Plan
NGOs	Non-Governmental Organizations
NHAG	Namibian Housing Action Group
NHE	National Housing Enterprise
PMS	Poverty Monitoring Strategy
PRS	Poverty Reduction Strategies
SAPs	Structural Adjustment Programs
SDFN	Shack Dwellers Federation of Namibia
SIDA	Swedish International Development Cooperation Agency
SWANLA	South West African Native Labor Association
SWAPO	South West African Peoples Organization
UN	United Nations
UNDP	United Nations Development Program
WB	World Bank

List of Contents

1. Introduction	6
2. Aims of this work	8
3. Methodology	10
4. Informal Settlement	11
4.1. Defining Informal settlement (slums).....	11
4.2. Inceptions and courses of inceptions	14
4.2.1. Brief information on Informal Settlement:.....	16
4.2.2. Globalization and poverty	20
5. Rural vs. Urban	24
5.1. Rural poverty.....	28
5.2. Surviving within urban poverty.....	29
6. Namibia	32
6.1. Brief introduction to Namibia within the context	32
6.2. Poverty in Namibia and policy framework of reducing poverty.	36
6.3. Migration patterns in Namibia	37
7. Informal settlement in Namibia (The case of Windhoek)	42
7.1. The present phase of Windhoek	46
7.2. Katutura.....	52
7.2.1. Katutura before	52
7.2.2. Katutura in present day	53
7.2.3. Choosing a location of stay	56
8. Implications of life with in informal settlement (hygiene, unemployment, crime) ..	57
8.1. Life in slums	57
8. 2. Access to public facilities	59
9. Current government programs and international organizations.....	64
9.2. Making a difference	65
9.3. The city response to Informal settlement.....	71
10. Potential changes	78
11. Conclusion.....	79
Resume (in Czech language)	80
Source:.....	86
Key words:	86

1. Introduction

Shelter remains one of the very basic needs for human population, since its existence it has played a vital role in human life. Yet, at present, over one billion people, a fifth of the world's population are either homeless or live in very poor housing conditions. Majority of the poorest people reside in developing countries.

Due to many different factors, and the present existing global systems (those of economic, social and political policy), a roof over ones head, had lost its traditional meaning for many. Safety and security has become a distance word for most of this people. Majority of the poor population today battles not just with keeping a stomach full, but as well as not having shelter, but as well as living in fear of being evicted from their homes, due to lack of legal protection provided to them.

In present days, shelter had rather become a luxury for most of the world's population, mainly with in the developing world where many of the poor struggle on dally bases have a roof over once head.

For the past years, most of developing countries are experiencing a high increase in urbanization, and Africa being the most critical case. For example, the Sub-Saharan African holds the lead in urbanization and having most of people living in slums.

Poor families in developing countries are forced to slum areas due to increase of prices in housing and other essential basic needs. They have been caste from the rest of society due global economy policy, politics and corruption at large, and left to scavenge in the outskirts of the cities. Conditions in urban life nowadays, are not the most welcoming for the rural poor.

However, the conditions, and situation differ from country to country. Different challenges as well prevail depending on the country. Due to lack of basic education and working skills

it has become more difficult for most rural migrants to cope with urban “standards and requirements”.

Many other factors contributing to hardening situations of rural migrants had rather made it difficult for most, and earned those living within informal settlement the name “urban slum dwellers”. Nevertheless, many people turn to forget that majority of the urban poor are left with little or no other choice, than taking refuge within the informal settlements (in other words slums). Though this phenomenon had taken strong root within the developing world, it will be very deceiving to think that this case is peculiar only to developing world as many turn to believe. Nevertheless, Namibia is not an exception to this case.

Just after a period of more than 40years of domination by German and South Africa, the Republic of Namibia gained her independence in March 1990. Since independence (1990), Namibia has been experiencing a high inflow of migrants from rural area to urban cities. However, this is does not mean that migration processes did not take place before Independence. This increasing and unpredicted migration accompanied by different forms of poverty just like in many Sub-Saharan countries, had led to a fast growing number of informal settlements in Namibia. The capital city, Windhoek and other major urban cities in this case, stand out as the most problematic on the issue of urbanization and dealing with the poor.

Windhoek remains the main challenge for the government of Namibia. Its population had been increasing enormously beyond the town’s geographic and financial capacity, in most cases resulting in the growth of illegal settlement within the informal settlement area and invasion of land.

Among the issue, believed to have contributed enormously to the situation are lack of education, and many other basic amenities in the rural areas, human capacity, and incompetence within the government to provide proper housing for its poor population. At the same time Namibia currently is ranked among the countries with high inequality. Indeed, this is due to unfair distribution of resources within the country dating back as far as the countries colonial past.

For this reason, I have decided to give an attention to the causes and problems that might have contributed largely to the phenomena of formation of informal settlement in Namibia. At the same time, in my master thesis I have looked at current strategies and ways used by the Government of Republic Namibia (GRN) in handling of these problems. It is

my duty to mention ahead that, the case of the informal settlement in Namibia had not been briefly studied. There is limited number of books and materials available that dealt with this situation.

However, few materials exist that confront the issue of informal settlement Namibia. It is my strong believe that in a small populated country like Namibia (and as young as she is), there is a need for more possible studies that would look deeply into this issue in order to help bringing possible innovative solutions that may be applied in solving and handling the current increasing poverty and growth of informal settlement in the country.

2. Aims of this work

The aim of this work is to give a brief overview of the informal settlements in Namibia in conjunction with poverty related problems that led to the current state of the country as from its early colonial history to present day. These include prevailing inequality, settlement problems and land related issues. This is to be done through a compilation of different sources.

In the process the reader should be able to connect the actions of colonial history, migration and other factors, such as that of global economy and politics in line with globalization on different terms, and how they have influence the livelihood of many in Namibia and in most developing countries, by contributing to urbanization which at some point directly or indirectly resulted in high poverty and increase of informal settlements (slums). Within this context, I intend to point out factors that are believed to have highly contributed to rural-urban migration in Namibia.

In the first few chapters, a brief introduction will be given on this subject concerning the human habit at global level. In short, an understanding of the term informal settlement will be provided to guide the reader in understanding what is actually meant by informal settlement and the Namibian interpretation will be provide further on.

In the following chapters, special attention will be given to the capital city of Namibia (Windhoek), where urbanization had grown very rapidly since the countries independence (1991), in comparison to other towns as shown in different tables and figures

respectively, and the way the city had been shaped throughout the colonial era till present days in accordance with its settlement habit and migration.

At the same time, by this, I would like to stress the lack of materials and information concerning the poverty situation before colonial past and migration that in most cases contributed to the current situation in the country. By doing so I believe that a more comparative and concise studies should be given on the subject. In a long run this should help Namibian government to tackle poverty and housing situation of the country.

Note:

The decision to work on this theme of informal settlement was mainly inspired by the human condition of people living within the informal settlement area in Okuryangava, a location in Katutura where I reside. The fact that I reside in a location not far from the slum area made it much easier for me to choose the topic of my thesis. As a teenager, I had the chance to observe how the suburb today called Onyika was turning into an informal settlement area. Among others, this is one of the places where slums started to mushroom in Windhoek and still increasing.

3. Methodology

The main methods used in this thesis, is the research-compilation approach combined with field work practical, based on collected data during my practical work in Namibia, 2007. Other important information on Informal settlements(slums) was obtained from different sources, references, electronic journal such as Jstor.org and research data such as EBSCOhost(this are online scientific database accessible form the intra-net of University of Palacky and Science library in Olomouc).

For much of the information concerning the informal settlement in Windhoek and the history of migration in Namibia, I used information collected during my field work. Information on informal settlements in Windhoek was mainly obtained from different materials and documents available at the city of Windhoek, Department of Sustainable Development and Planning, Urbanization and Environment, Shacks Dwellers Federation of Namibia and The Ministry of Local Government and Housing.

Much of the observation took part in different locations within the informal settlement areas of Windhoek city, mainly in suburbs of Katutura, were by a questioner such as that in (appendix 2, on last pages) . was provided by Department of Sustainable Development and had to be filled in while questioning different household with in the informal settlements.

The Survey was to take part during course of a full year, which I was not able to be part of, mainly because of the fact that I had to return for my studies in the Czech Republic. For such reason my work is rather concentrated on general issue of informal settlement in Namibia, particularly in the Windhoek (as mentioned above), rather that giving emphasize on data collected as a whole since no final results had been available during my period of stay and work of my thesis.

Another very important contribution to this work was an intensive lecture provided by Professor Berner, E., at University of Palackého, Faculty of Science, Department of International Development Studies during the period of 17-28 March, 2008, under the course titled UPA (Urban Poverty Alleviations)

4. Informal Settlement

4.1. Defining informal settlement (slums)

Informal settlements generally known as “slum” have become a global concern. At the same time, it has become the space where we find most of urban disadvantaged population, where majority of people live in impoverished conditions. According to UN-Habitat, It would not be adequate to describe all informal housing as slums (UN-Habitat, 2003, p. 104). Perhaps when taking into account the historical formations of slums in different countries and considering the structural formation of these slums.

Further explained, there is no precise definition to define “informal settlement” as such, as the cases and conditions differ from place to place in accordant with different culture and social groups in question.

Slums are complex phenomena to define according to one single parameter; they are relative concept and what is to be considered a slum in one city will be regarded as adequate in another city, even in the same country (UN-Habitat, 2003, p.11).

The first publishing of the word “Slum” is said to have occurred in James Hardy Vaux’s 1812 in *Vocabulary of the Flash Language*, whereby it has been understood as a synonym for words, such as “racket” or “criminal trade”. Later on Cardinal Wiseman transformed the word “Slum” from street slang into a term comfortably written and appreciated by most writers (Davis, M., 2006, pp. 21-22).

In general understanding, the term “slum or informal settlement” is define in many ways, at the same time in different countries their being referred to differently, in terms of conditions, environment. The use and understanding of this terminology differ from country to country. However, there are some general terms used such as, squatters, shantytowns, favelas (in Brazil).

Below are some definition used in understanding the term and phenomena of informal settlements

- *”Informal settlement” is a term widely used to refer to residential area that do not compile with local authorities requirements for a conventional township. However, the term “Informal settlement” is generally not viewed as different from the word “slum”. Though, the term slum seems to have been understood differently on global scale and much of an accepted term. Of course, the different ways of interpreting the term, can rather be understood within the cultural context of the region being studied (UN-Habitat, 2003, pp. 196-197).*
- The term “slum” often refers to inner-city residential area that were laid out and built several decades ago in line with the then prevailing urban planning, zoning and construction standards, but which, over time have progressively become physically dilapidated and overcrowded to the point where they become the near exclusive residential zone for lowest-income groups (UN-Habitat, 2003, p. 196).
- They are illegal groups of settlement, sometimes erected on land that has not been proclaimed for residential use. In most cases, they are a result of urbanization. Informal housing is considered informal when it does not conform to the laws and regulatory frameworks set up in the city in which it occurs (UN-Habitat, 2003, p. 104).
- The term” Informal settlement” often refers to illegal or semi-legal urbanization processes, or unsanctioned subdivisions of land at the urban periphery where land invention took place- often by squatters, who erected housing units usually without formal permission of the land owner and often with materials and building standards not in line with the criteria of the local building code (UN-Habitat, 2003, p. 196).

Slums are neglected parts of the cities where housing and living conditions are appallingly poor. They range from high density, squalid central city tenement to spontaneous squatter settlements without legal recognition or rights, sprawling at the edge of cities; they are a dominant to most developing countries (UN-Habitat, 2003, p.10).

In a broader view, such habitats are sometimes referred to as “slums, shantytowns or squatters”. In most cases, the areas are densely populated, and the household are constructed from different materials inadequate for housing.

The operational definition of slums that has been recommended in a United Nation Expert Groups Meeting (EGM) held in Nairobi from 28th to 30th of October, 2002 for future international usage defines slums as an area that combines, to various extents, the following characteristics:

- Inadequate access to safe water
- Inadequate access to sanitation and other infrastructure
- Poor structural quality of housing
- Overcrowding
- Insecure residential status.

(UN-Habitat, slums, 2003, p. 12)

As stated above, slums are indeed difficult to define, complicated and in some case a sensitive political issue when choosing the right term to refer to habitat or such conditions. Historically slums have been defined based on cultural and regional differences.

Nevertheless, the conditions in most cases remain the same, for such reason in this thesis, slums, squatters, sharks will be referred to as “informal settlement”, since this is the officially accepted term in the Republic of Namibia . Though, referred to as informal settlement in Namibia, colloquially they are referred to as *Embashu, pl.* which is equivalent to the words such as “slums, squatters, sharks or informal settlement“. This terminology has been generally accepted and shared by all Namibians irrespective of their ethnicity, race, or culture. However, considering the fact that most of the traditional and present households in rural areas of Namibia have very different system of arrangement, lifestyle and construction in comparison to squatting system and the way of living found in an informal settlement area. It remains difficult to know, whether this phenomena has been familiar to the Namibian cultures during the colonial and post-colonial era, since no concrete studies have been conducted on this subject.

4.2. Inceptions and courses of inceptions

Slums have a long history mainly connected to fast growing urban cities that attracted rural populations on bases of different factors. However, it is very important to make it clear that the condition that contributed to the fast growth of slums differ in respect to countries and regions in question. Generally, it is widely accepted by academics that growth of cities and slums in the developing countries, started increasing in the second half of the 20th century. According to different studies, the process of urbanization that led to the increasing number of slums had started earlier before. Fore example, that of Rio de Jainero's firs *favela*, Morro de Provincia dates back as 1880s, and contemporary phase of "megaslums" is said to date back as 1960s (Davis, M., 2006).

Further explained, developed states like the USA, in the 1970 and 1980s informal housing were formed when the rich started to abandon the cities in regards to the inflow of poor, and moved to more attractive localities, such places were mostly left abandoned by the municipalities and the state had shown no much interest. As for Africa, there is a dominating opinion that the peak of urbanization dated back as first half of 20th century. Still at that time, as David further explains, it was slow due to different colonial rules that were imposed to control labor migrants that they later had to return to rural area after their contract ended, however, most Africans would have moved to cities after independence (Davis, M., p.51).

Other observers have pointed out that urbanization of Africa have been a social process taking place like anywhere else. Much more of an interesting statement in connection to this view, is that in the article called: *The Process of Urbanization in Africa (from the Origins to the Beginning of Independence)*, the article more or less had touched the issue, by pointing out that formations of informal settlement in Africa is connected to the situation (whereby the urban special hierarchy was enforced by segregation rules, or pseudo- spatial health regulations), that had paved way leading to the present conditions. The author further emphasize that, however, the classifications of housing and jobs was reflected in place and space, due to different colonial regulations, which reflected the global export economy that lead to the growing centralization of economic activities within the central or prime cities. According to the author, this activity brought about consequences

leading to a growing ecological and spatial segregation within the cities. In a long run, this situation apparently had pushed most of the small-scale business activities from the center to make room for concentration of commercial and administrative activities, as well as making room for dwellings of the rich, while the peripheries become immensely for the workers and poor (Coquery-Vidrovich, C., pp. 68-69).

Davis (2006) further elaborates to the above statement, that by (1950 and 1960s) principal barriers were implemented by European colonialist, mainly that of the British colonial cities for eastern and southern Africa, which had basically denied the natives rights to urban land ownership and permanent residences (Davis, M., pp.50-51). An example, of this case is the segregating systems in South Africa that later expanded to Namibia, by the formation of townships in Katutura (further explained in this work in chapter 7). Within this topic the reader will get a brief insight on formation of informal settlements in Namibia.

Nonetheless, since 1970, the increase of slums had outpaced urbanization in the southern part of the globe, with the situation in Africa remaining extreme in comparison to that of South America and South Asia. Urbanization in Africa leads to high increase of slums in the continent, at the same time growing twice the speed of the growth of the cities (Davis, M., pp. 17-18).

Other observers attribute the growth of slums with the coming of the International Monetary Fund (IMF) mandate Structural Adjustment Programs (SAPs). For example, the Nigerian writer Bologun, refers to the policies of IMF as the process of “re-enslaving” urban Nigeria. Nonetheless, by critics it is viewed as organization with unfair policies that trigger poverty situation in developing world.

“The 1980s-when the IMF and the World Bank used the leverage of the debt to restructure the economies of most of the Third World- are the years when slums become an implacable future not just for the poor rural migrants, but also for millions of traditional urbanites displaced or immiserated by the violence of “adjustment” (Davis, M., p. 152).

Other observers believe, that current status and conditions of informal settlement is rather a subject of state failure, mainly those of the developing world, specifically those of Africa, at the same time, it is widely accepted that this had been attributed of current

existing high corruptions and bad governance within the respective governments of developing countries.

Among other causes that attributed to the increase of poverty and increase of slums at national levels are unequal distribution of public resources, and poverty driven rural-urban migration. Civil wars, natural hazards, and conflicts to some extent play a role in the increase of slums by forcing many people to flee their homes and countries. For example, in Asia, earthquakes, tsunami that left many people homeless and those that had no security or means of starting over again probably end up within informal settlement.

4.2.1. Brief information on Informal Settlement:

Recent UN data proves that majority of the world's population live in deprived conditions. In most parts of the world, mainly that of the developing world, they had been experiencing a high inflow of migrants to urban cities within the 19century (UN-Habitat, 2003).

Southern Africa remains the most urbanized region of Sub-Saharan Africa, with 40% of its population living in cities Tvedten, According to UN estimate, about a 50% of the Southern African poor population would be living in towns and cities by 2025 (UNCHS, 1996). However, United Nations data (2000) shows that with current trends of growth, about 60% of the population could live in urban area by 2025. Looking at the given data above, it clearly demonstrates that if the present growth rate of developing countries continue at the present rate, there is no doubt that more of poor will just as much continue to live in slums, since many are born within poor conditions. Currently the largest population living within informal settlements is found in Africa, about a half of the African population is living in informal settlements (UN-Habitat, 2003).

Recently, according to UN-Habitat data, the world's highest percentage of slum-dwellers is said to be in Ethiopia 99.4% of the urban population, Chad 99.4 %, followed by Afghanistan with 98.5%, and Nepal 92 %. And Bombay, coming with its 10 to 12 million squatters, including tenement-dwellers, is said to have gain the title of the global capital of slum-dwelling, followed by Mexico City and Dhaka (making 9 to 10 million each), then Lagos, Cairo, Karachi, Kinshasa-Brazzaville, Sao Paulo, Shanghai and final Delhi (with 6 to 8million each) (Davis, M.,2006. p. 23). However, he further explains that the poorest urban population is mostly believed to be found in Luanda, Maputo, Kinshasa and

Cochabamba (Bolivia), where two thirds of resident earn less than the cost of their minimum required daily nutrition (Davis, M., 2006, pp. 25-30).

UN data shows that if no changes take place, within the human population growth rate, there is a possibility that about two billion people would live in squatters by the year 2030 (UN-Habitat, 2003, pp.10-20).

Due to increase in the number of slums, almost every city within the developing world today deals with the problems concerning the habitat conditions of their poor population, and many of them, unfortunately living in slums. Indeed, this have become phenomena of the urban cities as it is being described by different observers studying the case of informal settlement and urbanization in developing world when pointing out that slums have rather become a central feature of the urban landscape.

Though it has become a strong believe among the lame person that only poor people live in the slums. Concurrently this notion contradicts itself. For examples, there are cases where poor migrants coming from the rural area to a certain extend turn to be assisted by relatives in the cities prior to their arrival until they are able to fend for themselves.

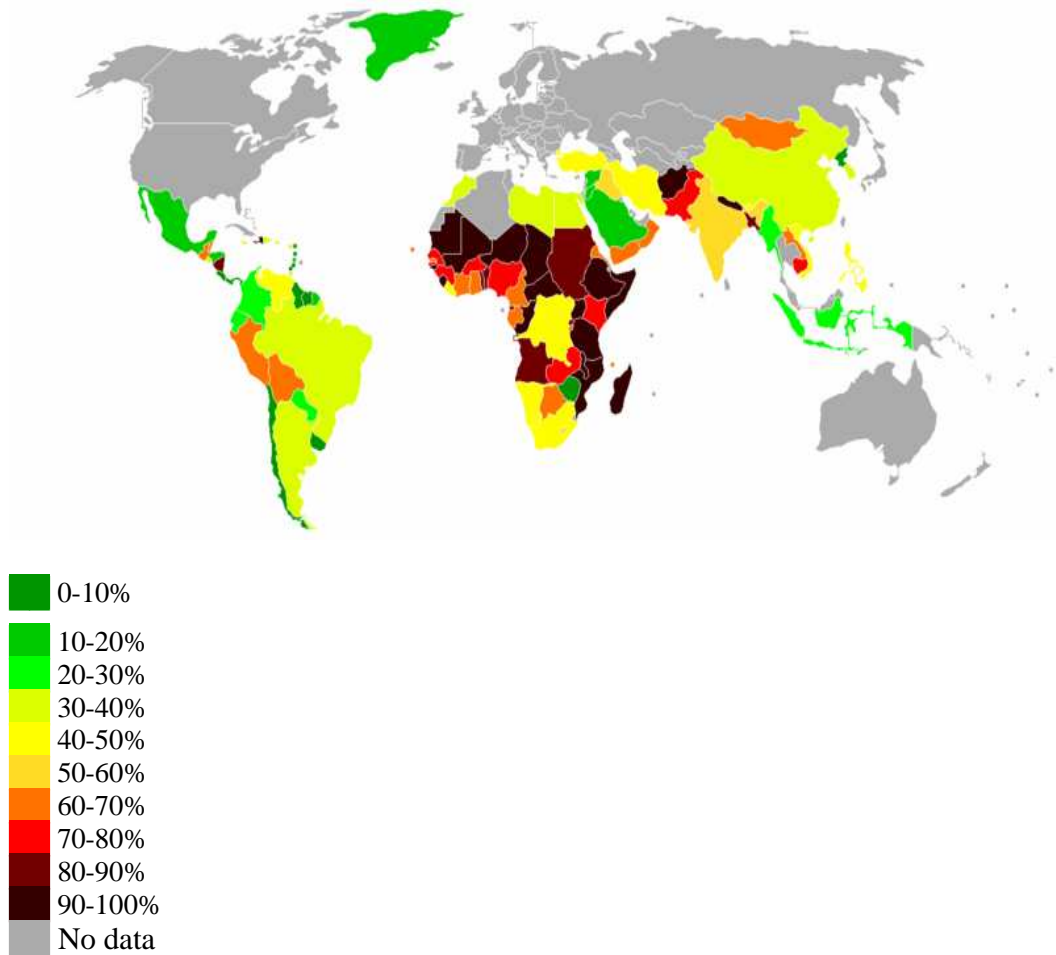
Davis(2006) further explains that probably there could be about 200,000 slums counted that differ in population from few hundreds to more than a million people.

For long this kind of settlement provided refuge to most poor people migrating from rural to urban area, just as much as providing refuge for many people who had to flee their war- torn countries.

“The Cities without Slums action Plan” was launched in Berlin in December 1999 at the inauguration meeting of the Cities Alliance. The World Bank and UN-Habitat are the founding members of the Cities Alliance (UN-Habitat,2003., pp 167). The Cities without Slums action plan constitutes part of the Millennium Development Goals (MDGs) The aim is to provide adequate living conditions for many people living in poverty within the urban areas by the year 2020 (UN-Habitat, 2003, p.196).

Despite the fact that Namibia is the second world’s least populated country, still the rate at which it is urbanizing is enormous. The need for housing remains a big challenge for the current government. Rural migrants to cities have increased since independence tremendously, and according to field researchers, though Namibia falls among the least urbanized country, still it has one of the highest annual growth rates of urban settlers from rural areas (Tventen, I., 2008).

Figure 1. Urban population living in slums



Source: [online] www.wikipedia.org

Table 1. The largest slum population by country

Country	Slums% urban population	Number in millions
China	37.5	198.8
India	55.5	158.4
Brazil	36.6	51.7
Nigeria	79.2	41.6
Pakistan	73.6	35.6
Bangladesh	84.7	30.4
Indonesia	23.1	20.9
Iran	44.2	20.4
Philippines	44.1	20.1
Turkey	42.6	19.1
Mexico	19.6	14.7
South Korea	37.0	14.2
Peru	68.1	13.0
USA	5.8	12.8
Egypt	39.9	11.8
Argentina	33.1	11.0
Tanzania	92.1	11.0
Ethiopia	99.4	10.2
Sudan	85.7	10.1
Vietnam	47.4	9.2

Source: Davis, M., 2006, p. 24, modified

Note: original source, UN-Habitat, 2003

Table 1. Show of the largest slums in percentage, chosen countries in the world, as we can see, African has the highest percentage of slums, with Ethiopia having the most critical situation. According to this table again, we see that slums are more concentrated in developing world

4.2.2. Globalization and poverty

Globalization had been pointed out as one of the most important phenomena that had greatly influence social development in the 20th century. Different national and international events fostered by global economy and politics at some point had an impact on the pace and level of social development.

Dominance of rich countries and that of world International Financial Institutions such as International Monetary Fund (IMF), World Bank (WB) and their policies created in the 60s for recovering debts of developing countries lead to the formation of Structural Adjustment Programs (SAPs). This in many ways, and the new trade orders had scattered the hopes of many that had been underlined at the World Summit for Social Development in 1995 (UN-General Assembly, Report, 2005, pp. 102-103) .

Structural Adjustment Programs and market reforms have shaped the way in which financial and liberalization had been proceeding in the past years. Whilst, in a long run had negative impacts on the lives of many individuals, groups and communities worldwide (UN-General Assembly, Report, 2005, p. 103).

In regard to these issues, governments of developing countries were forced to cut on their public expenditures, including subsidies for food and transport. *“Global competition pressures tend to restrict a country’s policy choice and often have adverse effect on social development, since decisions or actions required to advance social policies and social equality are usually perceived as unnecessary cost”* (UN- General Assembly, Report, 2005, p.105).

These conditions plus other factors of different nature had rather worsen the situation of many poor in the countries of developing world. Tragic measures like enforcement of privatization of public owned sectors and state owned enterprises had resulted to an increase of unemployment (UN-Habitat, 2003).

Global rules of economy had rather been concerned with protecting and prioritizing the interest of industrial nations, however, major concerns of developing world in this regard seems to be pushed aside. For example, the agricultural and labor intensive manufactured goods, are given high level of protection, through subsidies.

Nevertheless, globalization is a situation of complex issues that are hard to discuss (Goldin, I., Reinert, K., 2007). Generally given, it is a phenomenon of complex stated above, than just an economic phenomenon, driven by other factors, such as ethnological, political and cultural changes, however, with consequences (Fisher, S., 2003, p. 4).

Within the globalizing world, different continents remain exposed to different cultural changes, and Africa in this case, is no exception. Systematically, globalization had pushed aside most traditional ways of living in many countries, while at the same time promoting western traditional norms, sometimes at the expense of national and traditional cultures and values of developing countries.

In the meantime, according to some studies increase in labor force from one region to another, and promotion of cultural changes escalated by the phenomenon of migration. In other words, globalization coupled with migration remains the major cause that has from time to time played an important role in reshaping the values, cultures and displacement of human population. Nevertheless, it remains important to keep in mind that migration is rather a process that has been going on for centuries, and had a positive effect on lives of many just as negative (Fisher, S., 2003, pp.2- 4).

In regard to this case, in my opinion, it is not necessary to consider migration as one of the main factor that leading to an increase in poverty, when taking into account the fact that migration somehow had lead to an improvement of many migrants all over the world. For example, many migrants that migrate to other regions have actually said to have improved their situation in comparison to the kind of life they had lived before in their country of origin. Nowadays, thanks to improvement in technology, globalization is pacing rapidly, both economically and culturally. At some point, improvement in communication and technology and exchange of managerial skills in the future could be beneficial to developing countries. For this reason, it is rather important for developed nations to enable and provide access to free flow of information and technology to developing nations. Most probably the obstacle here remains in compliance of developed countries that controls the flow of information and technology, not willing to provide and share the know-how with developing nations, in regard to what is allowed to pass to developing countries.

At the same time, globalization is believed to have brought more opportunities and individual recognition. This in a way is believed to have improved the lives of many in developing countries.

Considering all that have been mentioned above, these phenomena of globalization in my opinion has definitely triggered the increase of migration from rural to urban areas causing an imbalance within human population in different regions. As a result of overpopulation and prevailing poverty, urban area has extended into periphery areas that provide refuge to the ultra-poor. Whether globalization is a positive or negative phenomena remain a subject of debate for many observers and researchers.

Whereas some observers strongly believe that globalization at some point had benefited the poor, a large population of the world continues to live in miserable conditions, mostly believed by other observers to be an attribute of ineffective global economy, social and political issues (Fisher, S., 2003, p. 4).

Different studies had proven that present global economy is rather increasing the gap between the rich and poor, thus creating enormous inequality in distribution of resources. They further connect the negative effect of globalization that mostly led to poverty within the year 1870-1914, whereby it rose after the World War 2. The authors further emphasize that the third stage that took part in the mid 1970 to present days, started revealing the impacts of globalization both positively and negatively (Goldin, I., Reinert, K., 2007, p. 21-24).

Moreover, it is explained despite all changes taking place that the process of globalization has rather given into the neo-liberal system that mostly privileges the wealthy. For this reason the system continues to be criticized by many individuals, academics, and different institution, such as Non Governmental Organizations (NGO's) in consideration with the current economic laws of global powers.

The speeding process of this phenomenon (globalization) is taking place at different rate in various regions, thus bringing gains or loses to different countries.

Africa in general is believed to be loosing out at global levels, by this I mean that though the continent is being opened up to the rest of the world in terms of trade and existing opportunities, at the same time, many believe that the continent has not reach the level of acceptance as an equal member of the global world, both politically and

economically. This in many cases could be the reason why Africa still remains one of the continents with the highest number of poor people in the world.

Indeed, developing countries had fallen victims to most global rules and tricks they are not ready play. Though it is believed to have brought many positive changes, the irony still remains that many people are not gaining from this process, but rather losing out. As a result many consider the way in which current global economy and politics as fatal and in some ways ineffective. International trade rules are making it very difficult for developing countries to compete with the rest of the world and sometimes at the expense of poor people. As it explains, “*a more comprehensive approach is need that addresses multiple economic and social challenges simultaneously and that emphasizes the explanation of the poor people’s capabilities*”. Furthermore, it is explained that there is a need to address business climate, infrastructure, and other existing barriers (Goldin, K. Reinert, I).

Thus considering countries of developing world, specifically those of Sub-Saharan Africa, are not ready for radical changes taking place at global level, be it economically, politically and socially given the position in which they stand.

With this difficult and challenging situations prevailing within the developing world, more and more people are forgetting their traditional ways of consulting and supporting their livelihood, everyday life, forgetting traditional values and norms.

Many are forgetting the most important practices such as cultivation and becoming depended on foreign ways that hardly work for their given environment, all this lead to a dependency system that rather benefits just the masters if this processes. As Bredley and Carter pointed out, “*traditional societies coped with drought through a number of mechanisms including grain storage after good harvests or, in areas particularly prone to drought, “nomadism”. Few observers ask why these strategies have been disrupted, or why rural people overexploit the natural resources upon whose maintenance they depend. The answer lie not with overpopulation or overstocking but with the subjugation of traditional livelihood under colonial rule, the increasing pressure from commercial agriculture on resources once held by the community for common use and the increasing of inequality of access to the means of production and basic services. Natural hazards such as drought can not be blamed for anything but the aggravation of problems whose causes are largely economic, social and political*” (Bredley, P.N, Carter, S.E).

And who knows, maybe it was more important for Africa at large to build on these traditions and any kind of development assistance should have been rather concentrated

more in this direction, after all, even the history of developed countries had their long past of pros and cons on which they had built upon to reach their present level.

Due to current existing poverty in Africa, majority of people are left to “scavenge” in the outskirts of big cities, living in slums, surviving from day to day as most lack access to the very basic human needs.

5. Rural vs. Urban

Different factors such as those understood by economist and sociologist as the “push and pull” play an important role within the process of migration.

It is widely accepted by most academics that people would normally migrate from rural to urban areas for various reasons such as war, hunger, natural catastrophes and economic reasons.

Tventen, emphasizes, that rural-urban migration should rather be looked upon as a complex strategy involving both rural and urban society. A system that is hardly difficult to separate. At the same time, it is a system of attachments between rural and urban newcomers driven by force of once will to return to both economic and social resources (Conquery-Vidrovitch, 1991, pp.47- 48).

Studies on urbanization and causes affecting urban growth and poverty in most parts of the world had increase to such an extend that it has provided different approaches and compilation of understanding rural and urban life. In regard to high increase in populations in urban areas around the world, for example, UN data in 1970 showed that a high percentage of world’s population had lived within the cities. Further it had explained that, by 1995 the worlds population figures was 45%, however, according to the estimates in 2005 the expected increase was 50% (UN 1995, in Masika, M., Haan, A., et al. 1971).

Southern Africa with its highly semi-arid condition makes it very difficult for rural people and farmers to maintain their livelihood. Neither is the condition good for cultivation, thus making it very difficult for people in the village and in some part of the region to grow crops and maintain subsistence farming. Just like in most developing

countries, farming alone has not been the only way of survival for rural farmers and people in rural areas (Dalal-Clayton, B., et al, 2003, pp. 22-27).

Moreover, this dry condition of Southern Africa is very typical to that of Namibian climate. Namibia is a highly semi-arid country, and the climate in the country is dry with low precipitations, and annual rain fall that is below 700mm.

Arable land accounts for 1% of total land (wikipedia.org -UN, 2008). However, still half of the Namibian population remains employed in the agricultural sector. Majority of rural population depend mainly on sustainable agriculture, cash transfer, employment provided on commercial farms and informal sector for income (FAO, 2001).

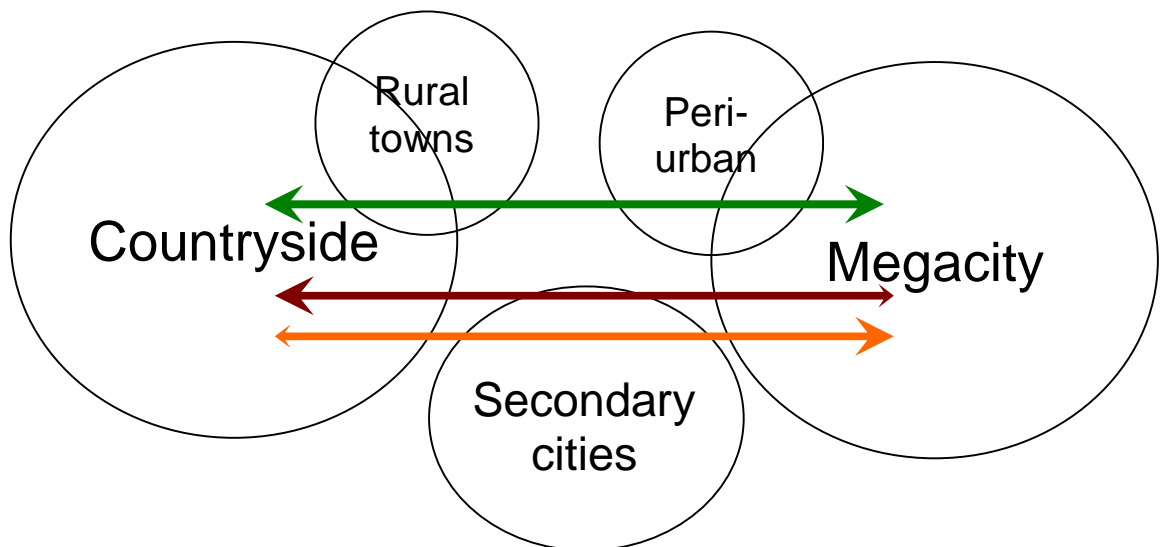
According to UNDP, agricultural productivity in Namibia is generally low, due to the country's arid climate, as well as poor and easily degradable soil (UNDP, 2007).

Life based on agriculture is so much a feature of the Global South, and has become increasingly difficult to maintain. Due to these conditions more and more people are migrating and looking for other alternatives (Swift, T.,)

At the same time, Tventen, explains that people in the Southern Africa move to urban area regardless the risks they could face in the urban cities, because they believe that the towns would at least offer the opportunity they will not find in the rural area. Further, it is explained, *“the changing urban environment decline in levels of formal employment, increase in “formal sector” employment, deterioration in quality and distribution of housing basic services, and decrease in the quality of building structure and natural urban environment has important implication for the migration strategies once they settled in an urban environment”* Tventen,. Meaning that in most cases migrations to urban area, is rather done in the hope for a better future, however links with the rural area remain sometimes maintained as one of survival strategy .

Due to the fact that most government of developing countries fails to provide basic services to rural areas, most people when given a chance would immediately move to urban areas.

Figure 2. Rural-Urban Links and Poverty



Source: Berner, E., Urban Poverty Alleviation ,17-18 March, 2008

Note: Figure presented during the lecture.

According to Professor Berner, it was further explained that, rural uplifting is more or less impossible without urbanizing. As shown in (figure 2), there is definitely a need to uplift small towns that are most potentially becoming urban centers in order to avoid a big flow of migrants to mega cities. According to most academics there is a need to emphasize the role of small towns in order to incorporate rural areas effectively in the process of urbanization and modernization (Berner, E., Oral source, 2008). I also strongly believed that there is a need to invest in rural areas in order to upgrade the rural population by means upgrading rural towns and peri-urban regions. I have to admit that the idea presented by the professor, that uplifting smaller urban towns that are potentially capable of up taking the rural migrants, has to some extent convinced me. Nevertheless, this does not mean that rural area should be developed at the expense of upgrading smaller urban towns. Concentrating on developing both regions could somehow help avoid high migrations to urban cities and at the same time tackling the issue of poverty.

People living within slums have been viewed in different ways, according to the conventional approach they are considered as dangerous and those that regress progress, this looks at the communities of the poor with negative approach. This kind of misunderstanding with less knowledge about the situation of the poor makes it very difficult for the government to cope with improving the conditions of the poor. As for Namibia, this condition has not been known or studied in depth or paid attention to by the previous government since 1991 (after independence).

Moreover, this has become a challenge for the present inexperienced government and newly independent country, and somehow leading to failure of governmental institution in tackling the problems and housing situation of the poor.

Majority of the urban poor are left with no choice but in some way or another left on their own to find a way of solving their existing housing problems and day-to-day challenges.

By and large I think that it is impossible to tackle rural poverty by just considering it as the main cause that leads to increase of informal settlement in urban areas, but rather one should view the issue of rural-urban poverty as an entity that requires a holistic approach, by considering both grounds.

5.1. Rural poverty

Poverty is a relative term that is quite complicated to define. It is a multi-dimensional phenomenon. Meaning that what might be accepted as poverty in one region does not necessarily have to be seen as a state of poverty in other region. Nevertheless, poverty does exist and it is a reality to most of the world's population.

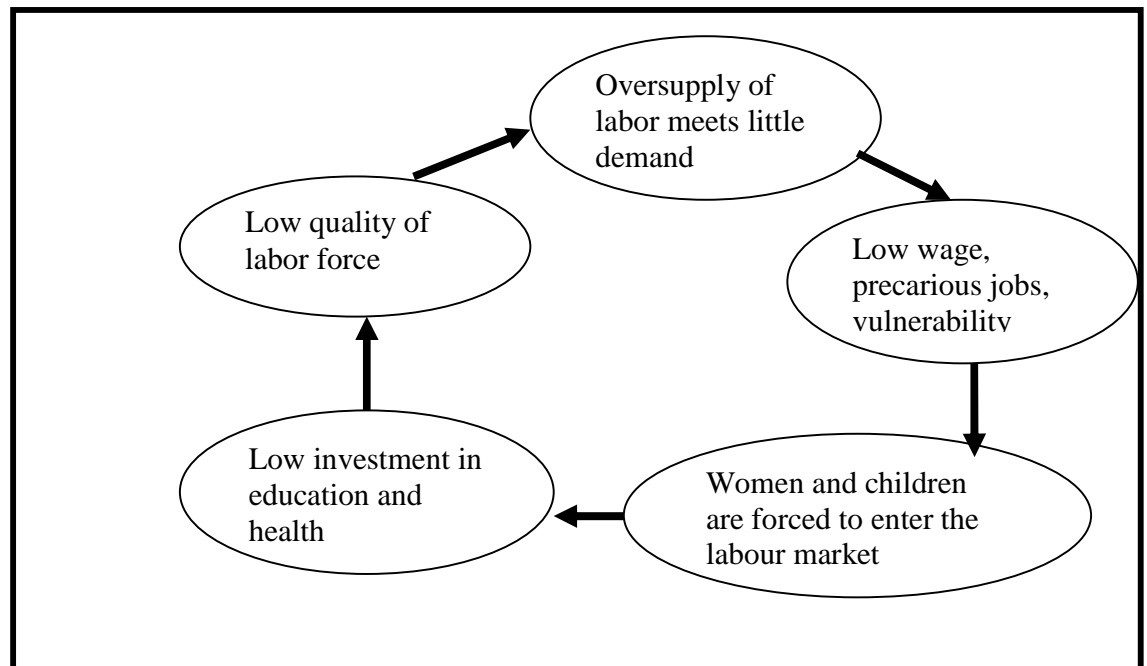
In different studies poverty had been mostly associated with rural areas, however, this need not to be necessarily true. Meaning that, poverty is not only an existing case for the rural area, but also highly prevailing in urban cities.

The fact that labor market and access to services remains more limited within rural area, had just as much contributed to migrants coming from rural to urban areas. Most of these people would normally migrate to urban cities, but at the same time this does not necessarily means that they would end up living a better or worse life compared to that which they had left behind in the rural area. Though, it is no doubt that people in rural areas, mainly those from developing countries lack basic education and skills needed to withstand current existing pressure in urban areas, improvement can only be reached if people are given the same chance to access resources, support and opportunity to improve their livelihood which in this case remains the main problem. However, due to lack of infrastructure development, this makes it very difficult for investors to diversified market within the rural area (Diamond, Nancy, K., 2004).

5.2. Surviving within urban poverty

About one billion of the world's population lives in urban poverty, mainly within the developing world. The number of the urban poor is increasing at a higher rate than that of the rural poor. Many people living in poverty are trapped in a condition that worsens their chances of improving every day life situation, health and education.

Figure 3. The vicious cycle of poverty



Source: Berner, E., 17-28 March, 2008, modified

Note: Figure presented during the lecture

Current economic systems require skilled and educated people, however, which most rural migrants are lacking. Due to their condition, most urban poor have found different ways of solving their impoverishing economic situation. For example, lack of employment had force people to work in the informal sectors. Though, trying as hard as they can, they face other challenges such as high crime rate, lack of protection and insecurity, danger of eviction, and they are more prone to health related diseases due to the environment they live in.

Several studies claim that within slums people have alienated themselves from the rest of the community. At the same time other studies have proven that they are rather communities where the culture of sharing has become a typical phenomenon, which in most cases contributes to the survival of majority of the poor people dwelling in slums (Berner, E., oral information).

When asked, few correspondences stated that, though they are faced with different crimes, in most cases keeping together and watching after each other's shacks is a more practiced attitude than alienating (Interview with a slum dweller, 2007).

Further more it is believed that, for survival different informal business activities are run in the informal economy. Though not many of this business activities are profit making, but rather of pure survival strategy from day to day, this situation helps most of people that do not have a chance getting jobs to survive the harsh conditions they live in. Many however, try to survive by diversifying their income as a form of security.

(Berner, E., oral source, 2008) Empirical evidence had shown that diversification of income sources is not a transitional phenomena, but rather, a persistent with great poverty reduction (Satterthwaite, E., Tacoli, C).

Different microcredit programs are being run by NGO's to help support the poor, but the question remains if the aid provided really does reach the ultra-poor, that is those in desperate need. Different studies at the same time question the work of NGO's, some went on as far as stating that some NGO's fail to provide proper service to the poor, and the so called microcredit seems to be mostly obtained by those that are already better off and not really reaching the ultra-poor population.

Though in some cases providing subsidies to the poor and to small business owners in form of microcredit at some point had proving to improve the situation of the poor, and some of those small business owners would take in the poor, considering the fact that, small business would rather employ the less skilled workers to minimize their cost. On the other hand this system had been questioned and criticized for this reason many had wonder it is really a pro-poor strategy.

At the same time few studies have proven that NGO's in some cases also turn to be corrupted and turning the issue of subsidizing in to money making business. Though microcredit do in some cases help the poor to get by, in one way or the other they are

expected to pay back the money which they can not afford. Nevertheless microcredit is rather helping them for daily needs (Berner, E., oral source).

In other cases the NGO's also make sure that they get their money back, for this reason some rather prefer to provide microcredit to certain given to groups in communities that are more credible of paying back the money. This however, discriminate the ultra-poor. One very good example of this situation is that were you get groups mostly formed of certain members of the communities that probably directly or indirectly know one another, and at the same time are aware of who can or cannot afford to pay back.

This in a way it forces people in slum to select themselves, within this process of selection members are prone to making sure that they do not get in their group a very poor individual. Thanks to this system they fear that the very poor will not be able to refund the money, and thus endangering their next chance of getting microcredit (Berner, E., oral source, 2008). At the same time, it causes division among poor people, which is the least of what they need in their kind of environment.

Though, designing a microcredit for the poor is not an easy task to do and it should be quite clear to most that only the poor know better how to use the miccredit provided to them, for this reason consultation at community base level should be necessary when implementing a system of assistance to the ultra-poor. At the same time, the professor pointed out that providing credit to the poor does not come without cost. Nevertheless, a holistic idea of tackling the problem of the poor should be made necessary, though it may not be an easy task to solve.

Many of the poor run their business within their households; however these households are the same that are considered to be illegal and sometimes marked for demolition. Demolition of households at the same time destroys small businesses of those that are potential to help themselves, due to lack of security. For this reason their small survival businesses are handled in such a way that requires little or no risk, and this they do by diversifying their income (Berner, E., oral source,2008).

As proven by most writers concerning this subject, the rural-urban connection remains a vital condition for survival for both the rural and urban. “*from the prospective of livelihood of vulnerable individuals or households, access to both rural and urban context*

is likely to greatly increase the diversity of opportunity, thus increasing security against the extreme shocks which are common in developing world” (Dalal-Clayton, B., et al. pp. 22-25).

It is recommended that:

There is need to increase economic growth in developing countries, and equal distribution of resources. Though economic growth remains necessary for most countries, still it remains insufficiently managed. There is a need to look into new effective ways of dealing with current existing poverty among the ultra-poor at global level, by implementing more and providing a pro-poor growth that support equality and equal redistribution of resources in the world. It should be noticed that, exclusion does not at any point improve the lives of the poor. There is a need to improve education, skills and access to good health facilities, this in most cases can in half way be achieved if global economy, social and political policies are strictly handle in a manner that respect basic human needs and dignity without any form of discrimination and cupidity.

6. Namibia

6.1. Brief introduction to Namibia within the context

Namibia is country situated in the southern part of Africa. The country stretches from South Africa to southern Angolan border, with Atlantic ocean on its western coast. The neighboring states are Botswana on the eastern side, South Africa on the southern part and Angola on the northern part of the country and holding land boundaries with Botswana and Zambia. The Caprivy strip is the most north-eastern part of the country lying along the Zambezi River. The longest river in the country is *Kavango* with 500km, followed by *Kunene* and *Rwakana* respectively. Namibia is a country with harsh environmental issues and constrains that contribute generally to the poverty situation in the country. During the dry seasons, which is (September- November) the rivers are dry and take up inflow during the rainy seasons (January-April). The harsh climatic and weather conditions, with spares and erratic rainfall contribute the annual rainfall which is below 700mm, thus, making availability of fresh water sources limited.

Namibia is highly semi-arid and one of the driest Sub-Saharan African country (Dima, S. J., Ongunmokund, A.A. Natanga, T., 2002). The two major deserts are the Namib

Desert along the coast and Kalahari Desert found in the south-eastern part of the country, both deserts are extend far into the inland within the countries territory. On the contrary, this provides it with a weak agricultural base and makes survival in the rural area difficult.

In terms of population density, it is a big country with total area of 825,418 km², with the population that holds about 2,088,669(CIA, World Factbook, Namibia, 2008).

The largest population is concentrated in the northern part of the country and makes about 60% of the entire nation, at the same time it is the place where we find most of the rural population.

Namibian society is highly homogenous with many different ethnic tribes, the native ethnic composition in Namibia is made up of 12 main tribes, whereby majority are of the Owambo tribe dominantly residing in the northern part of the country, in Owambo land, the oldest tribe of Namibia is believed to be the San people, in other words known as the bushmen people. All ethnic groups are of different cultural backgrounds, values, languages and geographical location.

Besides the native population that makes up the majority, Namibia is a home to generation of the European posterity that came into the country during the colonial era, such as the Germans, Afrikaners and British that had lived in Namibia for generations (Sandberg, K., 1997, pp. 20).

Another specific feature for Namibia is the fact that it happens to be the last of the African country to gain independence in March, 21 (1990), at the same time symbolizing the end of colonial era on the African continent. This makes it one of the youngest democratic countries in Africa. A base on which the Namibian government wishes to set an example of a successful democratic African nation by trying to avoid failures of early made and still going on in many African countries.

The country is divided into 13 administrative regions (figure 4): Caprivi , Erongo, Hardap, Karas, Khomas, Kunene, Ohangwena, Okavango, Omaheke, Omusati, Oshana, Oshikoto, Otjozondjupa. During the apartheid era, most Namibians, especially those of the northern part of the country fled the country for refuge in Angola, Tanzania and other parts of the continent in search of refuge. After independence, majority of those that fled, returned to the country in hope for a better future (Frayne, B., Pendleton, W., 2001)

HIV/AIDS presents challenges with socio-economic implication among the poor, due to loss of income (UNDP, 2007).

Though still a very young country, much has to be done in order to tackle the current challenges the country is facing, such as poverty that is so wide spread and dealing with the fast growth of urbanization, if it aims to set an example for the rest of Africa..

Besides other challenges, housing problems and access to land remains one of the critical issues in everyday life of the ordinary Namibian. The country ranked among those with high inequality rate among its population, where 5% of the population is in control of 70% of Gross Domestic Product (GDP) (UNDP, 2007).

Access to land during the colonial era was unequally distributed, and determined by various factors such as race, the black citizens of the country had no privilege to owning a land, which in my opinion has highly contributed to the current situation directly or indirectly concerning the poor, and currently presenting one of the challenging subjects for the government. The situation, presented during colonial era in Namibian was close to that of South Africa. For instance, in South Africa, a fixation law on racial control determined the pattern of access to land, whereby it had privileged only the whites throughout the twentieth century. Blacks we restricted to “native reserve” (further emphasized in the next chapter). While the system of migrant labor controls ensured non-permanence presence of blacks in the urban areas.

Poverty in Namibia



Source: Authors, Windhoek, Katutura

Majority of the population lives in the northern part of the country where wide spread of disparity within infrastructure development prevails. Poverty, just as much in the north is highly spread in the central and southern region of the country. Inequality in education and health services present other dimensions of poverty in Namibia.

In order to deal with poverty situation, the government had placed poverty reduction on its development agenda, in the formulation of Poverty Reduction Strategy (PRS), approved in 1998. Through its objectives and guide lines Namibia wishes reach Vision 2030, the Second National Development Program (NDP II), which sets medium development goals and target for poverty. This includes income distribution, Decentralization policies and the Millennium Development Goals (MDGs). Among those mentioned, there are other development policies set to assess poverty in the country, such as 1998 Food and Nutrition Policy, Gender Policy, National Agricultural Policy, National Drought Policy and Education and Health Policy.

The main directions of PRS:

- *“How to foster a more equitable and efficient delivery of public services in the context of the commitment to decentralization in Namibia*
- *How to accelerate and equitable agricultural expansion including a consideration of food security and other crop development options*
- *Option for a non-agricultural economic empowerment, including and emphasis on informal and self employment options.*

(Hon. Ngatjizeko, I., 2004, pp. 1-7)

In order for the country to combat poverty affectively, policies need to be implemented in a manner that would address the roots of the countries poverty, meaning it has to be put in place and effective management and corporation with in different government sectors will be of great importance, otherwise this policies will remain nothing, but mere statements.

6.3. Migration patterns in Namibia

For a brief understanding of the migration process in Namibia in relationship to poverty, it will be better to provide a short review on Namibia history, the urban history, mainly that of urban center. The historical affects had a great stand and contributed to migration patterns of Namibia, that later on proved to have affected urbanization of towns, mainly by contributing to the increase of poverty in the country, just as much as urbanization of the capital city Windhoek. Further emphasized, “ *The colonial occupation, including wars with both the German and South Africa armies, and the implementation of a capital economy, established radical inequalities in development (regional inequality) which still exist today in spite of modest rural development since independence*” (Frayne, B., Pendleton, W., 2001, p. 1060).

Tventen (2004), emphasize that historically migration had been taking place in Namibia like anywhere else. However, Namibia had never really developed large centers like other Southern African countries thanks to its environmental conditions (Tventen, I., 2004).

For this reason, in chapter on migration, I would rather concentrate on migration that somehow is believed to have contributed to an increase in urbanization since the 19th century. The period that has given rise to an increase of population in cities in Namibia, mainly that of the capital, thus in along run resulted in the rise of informal settlements.

According to different historical documents, current migration in Namibia dates back as far as the Namibian German colonial era (1884-1914), then know as “German Southwest Africa”. During the period from 1904 -1908 the Germans brutally defeated the indigenous people of Namibia, mainly those of the Herero and Nama tribe. Majority of the survivors were forced off their land, and deprived of their land rights to property, including livestock, which was most essential to the lives of indigenous communities and was the central feature of economy and culture.

Major parts of the land in the central region of the country belonged mostly to the Herero and Nama tribes (the tribes that dominated the central parts of Namibia).The central part of the country then became the main commercial German centers (Tventen, I. p. 9-10).

However, later on, after the First World War, the rest of the country fell into hands of South Africa that continued with the German restricting laws. After the German defeat, South Africa colonial rule went on implementing apartheid laws that had been already

practiced there at large. By 1960, the north-eastern, west to southern belt of Etosha pan was controlled by the South African police zone, called the “*Red Line*”. And people from the northern part of the country were not allowed to cross the line (Preston, Rosemary., 1997, p. 455).

A big part of the country was controlled by racial laws and restrictions that were then passed on urban resident, such as property ownership that strictly forbids the rights of the natives to own land and use of public amenities (Simon, D., 1996, p. 52).

Pendleton , argues that, during the German colonial era, most people were forced by the existing situation to migrate and take-up jobs in the new growing urban cities working in the Germans farms. This probably could be referred to as the first era of urban migration in Namibia. In regard to the mentioned above, it is further explained that, “*The first rural-urban migration of Africans to Windhoek was survival strategy forced by defeat in war (1842-1915), men were recruited as laborers, while women were recruited as households*” (Pendleton, W., 2001).

Until 1976, labor migration from the north (the northern region of Namibia, were majority of the natives comes from, mainly that of the Owambo tribe) was controlled by the South West African Native Labor Association (SWANLA), under South African rule on the bases of contracts in mines and farms. Once their contract ends, the migrants were required with no compromise and choice to return to the north (to their respective villages).

However, as Tventen further emphasizes, the African workers that made it to the urban parts of the country, mainly in the capital were forced to live in “locations” which in most cases were of inferior standards than that of its white workers (Tventen, I., pp. 10-12).

Due to oppression rule, majority of the people were left with no choice, but to move with the liberation movement of the South West African People’s Organization (SWAPO). About 40,000 Namibians went into exile in Angola, Botswana, Zambia, Europe, Cuba and North America. Of those that left the country during struggle many were of the Owambo ethnic group, however, other ethnic groups were also present, only to return after independence 1990 (Frayne, B., Pendleton, W., 2001, p.106). I have come to agree with the notion stated by Frayne and Tvented, that the critical point of urbanization in Namibia, was after its independence.

In short, general migration patterns in Namibia could be divided into:

- **Political History:** During the German-Herero-Nama war of 1904-1908, those that survived fled on exile to Botswana, only to return in 1995 (Frayne, B., Pendleton, W., 2001, p 1059). People migrated mostly to Angola for political reasons. During the South African colonial era, most the migrants were members of the Owambo tribe. Among the dominating sub-tribe of those that migrated were the Ovakwanjama people of the Owambo tribe, followed by the Herero tribe, Kavango and Kaprivi tribe respectively. “*Labor migration from the north was controlled until 1976 by the South-West African Native Labor Association (SWANLA)*” (Frayne, B., Pendleton, W., 2001, p. 1059). The contract mainly provided employment to towns, mines, and farms for the Owambo tribe. After independence, about 50,000 people were recorded to have returned from exile. Most of this people were Namibian refugees, returnees, and ex-combatants (Preston, R., 1997, p. 453).
- **Rural-Rural Migration:** This case mostly refers to a condition whereby people migrated mostly to greener pasture because of their cattle. This kind of migration is of great importance to tribes living in the northern Namibia, those of *the* Owambo, Kavango, Caprivian and Himba tribe (Frayne, B., Pendleton, W., 2001, p. 1061).
- **Rural-Urban Migration:** This mainly takes place between the rural-urban communal towns, and urban central towns. Windhoek as the capital city has become the main destination. However majority of the people coming from the rural areas end up mostly in Katutura ,a location in Windhoek that is predominantly of black population (Frayne, B., Pendleton, W., 2001, p. 1073)
- **Urban-Rural Migration:** This phenomenon of migration from urban to rural area has not been recorded much among the Namibian communities. However, there are cases were cyclical migration become evident in Namibia, though reflecting within a fraction of the population, that of the Owambo tribe, mainly for family and economical reasons, such as finding it hard to cope in towns.

Frayne and co-workers further explained, “*more people migrate to urban areas then leave these areas to return to rural life. However, that does not mean that those that came will stay or are satisfied with town life*“(Frayne, B., Pendleton, W., 2001, p. 1061).

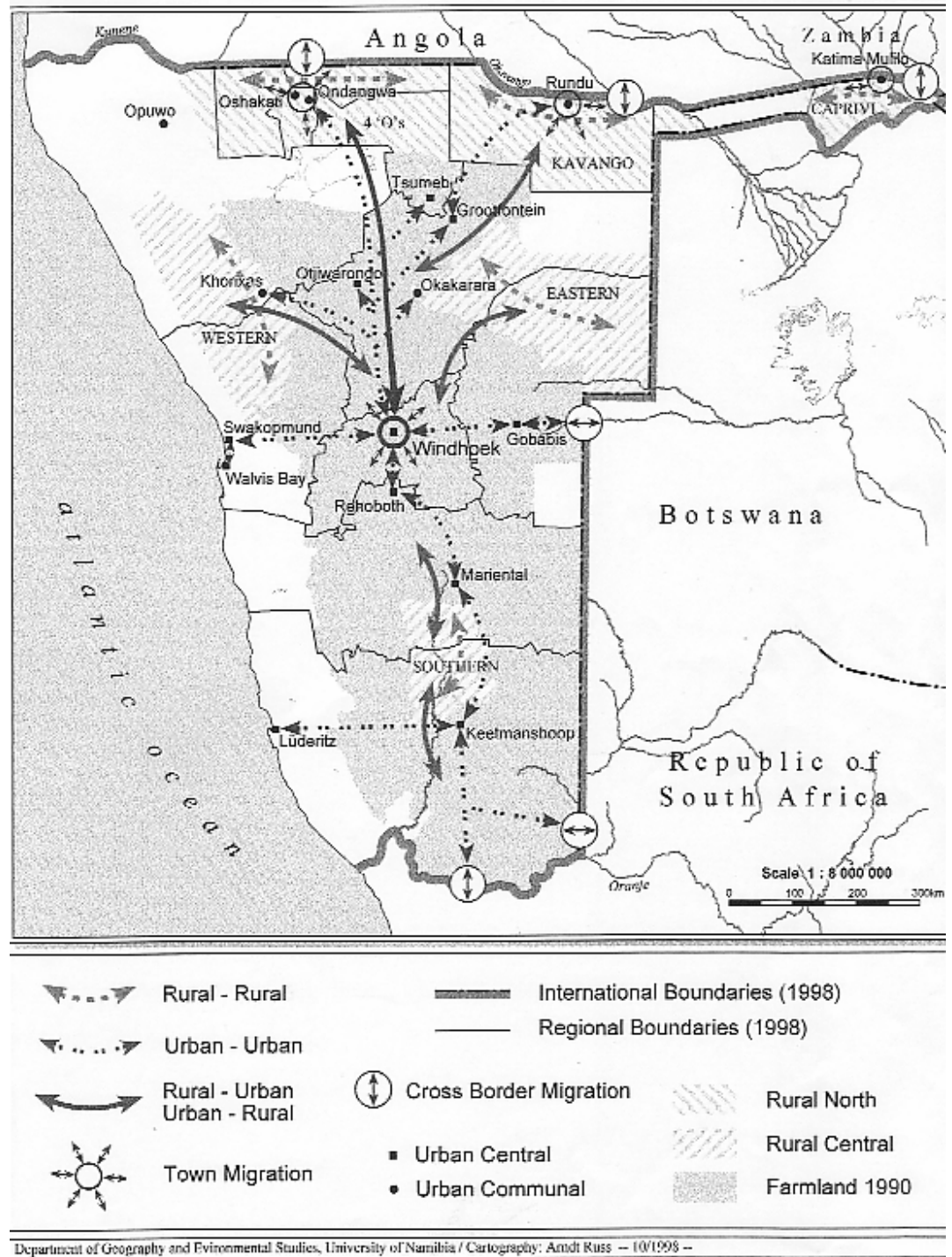
By pointing out this statement, Frayne and co-workers more or less had emphasized on the situation of people living within the urban areas but yet struggling to have a decent standard of life.

- **Urban-Urban Migration:** It refers to people moving from one town to another, in this case Windhoek still being the main destination. This can be attributed to economical reasons.
- **Cultural:** This case includes cases, whereby people prefer to move to areas of same or similar values and cultural practice. An example of his case is the situation in Katutura whereby people of same tribe are mainly found to be cohabiting in the same location.
- **Environmental:** This is a type of migration encouraged by environmental reasons, such as moving because of drought, in search of more valuable land and pasture for their cattle. At the same time, the dry weather condition in the country makes it very difficult for farmers and households in rural areas. This mainly contributes to lack of income generation.

On the contrary, though Namibia has a relatively small population, the distribution remains uneven, mostly because of regional inequalities, environmental conditions and political history. For example, in current days the northern part of the country makes up about 60% of the population, rural central 6%, commercial farms 9% and towns 25% of total population (Frayne, B., Pendleton, W., 2001, p. 1060).

Frayne and Pendleton (2001), further divide the factors contributing to migration pattern in Namibia into macro factors, such as political history, poverty, environment, demography, epidemics and cultural relations. It is important to note that other major issue contributing to high inflow of migrants in Namibia are those such as the economic issues, living conditions, education and health care, which in most part of the rural areas are not provided with good standards (Frayne, B., Pendleton, W., 2001, p.1059). Despite the harsh social, economical and environmental conditions awaiting the poor within the urban areas, people still continue to migrate to urban towns, many of them ending up in growing slums. However, in hope for better chances and opportunities that urban town has to offer (Tvedten, I., 2004, p. 359).

Figure 5. Early migration pattern of Namibia, 1998



Original Source: Pendleton, W., 1998, Migration and Urbanization in Southern Africa: The case Windhoek.

Note: Obtained from, City of Windhoek, Department of Planning, Urbanization and Environment

Table 2. Shows the population number in 1991-2001

Name of Region	A (km²)	C 1991-10-21	C 2001-08-27
Erongo	63,720	55, 470	107,663
Hardap	109,888	66,496	68,249
Karas	161,324	61,162	69,329
Khomas	36,805	167,071	250,262
Kunene	144,255	64,017	68,735
Caprivi	19,532	90,422	79,826
Ohangwena	10,582	179,634	228,384
Okavango	43,417	116,830	202,694
Omaheke	84,732	52,735	68,039
Omusati	13,638	189,919	228,842
Oshana	5,290	134,884	161,916
Oshikoto	26,607	128,745	161,007
Otjozondjupa	105,328	102,536	135,384

Source: National Planning Commission of Namibia, 2001, modified

Available at: www.citypopulation.de/Namibia.html

7. Informal settlement in Namibia (The case of Windhoek)

Accurate statistics are sometimes difficult to provide in the case of Namibia, in the past no record were taken. And as mentioned before, few materials exist, or are available that tackled the problems concerning the issue of urbanization in Namibia and the phenomena of shantytowns.

In general a strong perception exists among the researchers concerning accuracy on African data at large. For example it had been viewed that governmental institutions of most African countries provide information that are unreliable, and in some cases

deliberately undercounted (Davis, M., 2006, pp. 26-27). However, by pointing Davis statement, I'm not trying to say that the same case have been recorded in Namibia.

Nevertheless, the point remains that urbanization in Namibia has attained an explosive rate after its independence in 1990, Windhoek recorded an annual growth rate of 5% from 1995 due to rapid migration of rural population in the cities, thus leading to a rapid increase of shanties in urban area (Dima, S.J., at al, 2002).

At the same time, it was the period in which the country started experiencing its highest rate of migration to urban areas, in other words urbanization.

Most of the migrants were unable to get jobs, and were left with no choice but to live as squatters in and around peripheries of towns. The overwhelming tragic situations are currently still found in big towns and cities like Windhoek, Oshakati, Ondangwa, Walvis Bay, Swakopmund, Rundu and Katima mulilo. The most critical situation remain, though in the capital city Windhoek (Dima, S.J., Ongunmokund, A.A., Natanga, T.2002).

According to UN-Habitat estimate (2001), Namibia with its total population of 2 million by then, had urban population accounting for 31% of the total population, while slums in comparison accounted for 38% (UN-Habitat, 2001). At the same time the annual population growth rate was about 4% for urban and about 3% for slum respectively. Currently, in terms of population the largest town in Namibia is Windhoek found in the central part of the country, and accounting for the highest urban population of the country, followed by Oshakati, Walvisbay, Swakopmund and Rehoboth, respectively. As for the costal towns Swakopmund and Walvisbay, the increase of migration is evidently trigged by prospering fish industries.

During the year 2001, the total population of Namibia was 1826,854, while Khomas region presented a total population of 250, 262, those presenting about13.7% of the entire Nation (Table2).

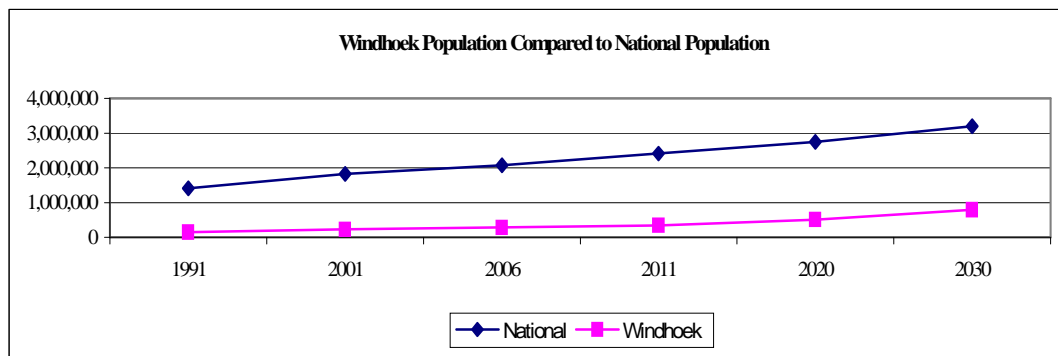
National Comparative Figures

Table 3. The table and graph below compare Windhoek with the National situation.

Windhoek Population as a Proportion of National Population						
	1991	2001	2006	2011	2020	2030
National Growth rate	3.60%	2.60%	1.50%	1.50%	1.50%	1.50%
Windhoek Growth rate	4.35%	4.44%	4.44%	4.44%	4.44%	4.44%
National	1,409,920	1,826,854	2,077,020	2,410,466	2,756,103	3,198,570
Windhoek	147,000	227,000	282,072	350,505	518,199	800,138
WHK as a % of National	10.43%	12.43%	13.58%	14.54%	18.80%	25.02%

Source: Human Development Report, UNDP, modified

Figure 6: Windhoek Population Compared to National Population



Source: Human Development Report, UNDP

Table 4. Comparing Windhoek to other large urban centers in Namibia, 1991-2001

Town	Population
Windhoek	227,000
Oshakati	42,649
Walvisbay	27,379
Swakopmund	25,442
Rehoboth	21,782

Source: City Policies/ Municipality of Windhoek

City of Windhoek, Department of Planning and Urbanization and Environment, 2001)

Table 5. Regional summary report for Informal Settlements in Namibia, 2007 done on 60% of urban areas

Region	No. Informal Settlements	Estimated Households	Estimated Population	Land Ownership
Caprivi	10	15,476	35,577	None
Erongo	14	4,699	25,181	None
Hardap	23	11,583	37,357	None
Karas	6	1,383	9,300	None
Kavango	19	20,487	114,253	None
Khomas	4	2,179	11,102	None
Omusati	14	5,337	27,130	None
Kunene	16	6362	34490	None
Ohangwena	11	2,468	9,480	None
Omaheke	5	2,530	7,150	None
Oshikoto	7	35,888	118,599	None
Oshana	22	5,113	16,145	None
Otjizondjupa	19	17,560	78,000	None
Total	177	130,188	503,524	None

Source: Slum Dwellers International, 2007, modified

www.sdinet.co.za

7.1. The present phase of Windhoek

Windhoek is located above 1650m above sea level. The present phase of Windhoek can be attributed to its early colonial history. However, it is necessary to mention that with time it has experienced different changes of governments that contributed to its present phase. In 1890-1915, it was known as the German South-West African colonial town. The South Africa colonial era included Windhoek as part of its five provinces.

By then, Namibia still known as German South-West Africa under the protectorate of South Africa had its capital city divided in two different locations, one predominantly dominated by white and the other for the black population only. This situation had provided the base for different social structure of Windhoek as we know it till present. This was done on the bases of South African apartheid system implemented by its colonial rule, in order to prevent the extension of black townships to white locations. For that reason a new location then called the “New Location” (known presently as Katutura) was created (Pendleton, W).

Pendleton further explains that in 1913 Africans living in different parts of Windhoek were forcefully moved from their original locations to the “New location”, a location that was to remain segregated. Above all, the location was not only segregated from its white counterparts, but efforts were also made to separate the black population into ethnic groups. This purposely created the image of Windhoek in the past, still remains visible in present day, especially when taking a closer look at the way different ethnic groups are distributed in Windhoek.

During the colonial era, it was mostly men that would take-up the responsibility to migrate to cities in hope to find jobs, sometimes traveling as far as South Africa for mining jobs. Migration to urban areas by then was not as common as it is at present, but was rather widely controlled and monitored by the South African regime. Nevertheless, people remained under the oppression laws with limited rights (Natanga, T., 2002).

Independence had brought forward more democratic rights that were implemented and paved way for freedom of movement. Nevertheless, considering the time that has passed by after independence, still the current prevailing poverty rates in the country and lack of adequate shelter is forcing many to live in deprived housing conditions in slums, not to mention education and services, many continue to question the capability of our

government, despite its success. This has left most Namibians wondering if much has been done at all or not, from 1990 till this moment.

Prior to independence the City of Windhoek had grown rapidly with a growth rate of 5.4% per year resulting into population increase of 97,000 in 1998, and 182,000 in 1995 (Dima, S.J., et al.,2002).

With this regard, it is explained that, *“the population of Namibian’s capital city, Windhoek, has been growing at an annual rate of 5.4 percent in recent years, the largest annual growth rate in its history”* (Bruce, F.M.)

Even though in the past only men would migrate to the central parts of the country, today it has become a normal for the women too. Recent transformation in migration had also been attributed to the ever increasing number of women, especially young unmarried moving independently. After women started to migrate more, at the same time they became more independent, free from their male counterparts, and responsibilities of rural life. Despite the difficult situation awaiting them in the urban areas, many still feel that migration provides a gateway for the poor (Satterthwaite, D., Tacoli, C).

The sudden inflow of rural migrants into the city evidently proves that it has contributed to the fast growing Windhoek’s population, with majority of them ending up in slums. Present situation clearly proves that the current policies are failing to serve and cope with the current increase of urban population.

According to Central Burrow of Statistics (CBS) records in 2001, Windhoek had about 25% of informal settlement structures, and only 70% of the structures had been regarded as formal. The remaining 5% was classified as others , that is those that included mainly traditional dwellings, single quarters and other forms of dwelling that has not been recognized as either formal or informal (Windhoek, Central Burrow of Statistic, 2001). Statistics had shown that shacks in 2001 accommodated about 13,541 households accounting for a total of 48,183 people, while the total population of Windhoek was about 224 000 almost a half of the total urban population of the country (Municipality, Department of Sustainable Development of Windhoek, 2001).

It is not surprising that different criteria, such as better education, infrastructure, job opportunities and etc. attracts more people to the cities, contributing as well to growth of informal settlements.

In fact, when the first census was conducted in June 1995, Windhoek had about 181 696, while the population of the northern and northwestern area of Katutura accounted for 129

505 of the total population of Windhoek. Immigration accounts for 72% of the annual growth rate in Windhoek. And estimation from the Namibian Burrow of Statistics explained that about 595 people have moved to Windhoek since 1991.

During the year 1995, about 57% of the informal settlement were male while only 42,2% were female. In total about 72% of the informal settlers were aged between 20-44 years (Windhoek Municipality, Document, Windhoek Structural Plan, 1996).

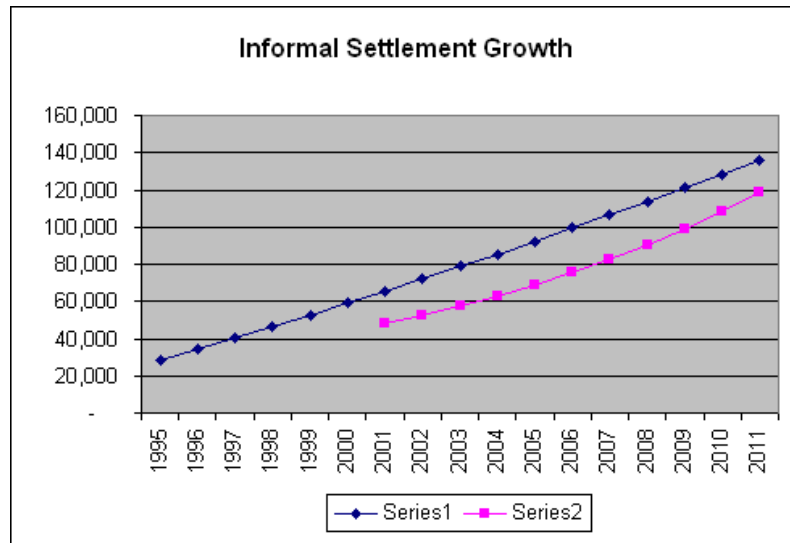
Table 6. Informal settlement growth in Windhoek 1995

Description	Windhoek Population	Informal Population
1995	181,696	28,000
2001	233,529	48,183
2001 Number of Households	54,707	13,541
Absolute growth over 6 years	51,833	20,183
Average growth per Annum	8,638	3,363
Average growth per Month	720	280
Households per Annum	2160	841
Households per Month	180	70
Annual Growth Rate:	4.44	9.46

Source: City of Windhoek, 1995, Windhoek Resident's Survey

In this table, it is evident that the informal settlement growth rate is twice as that of the entire Windhoek.

Figure 7: Informal Settlement Growth in Windhoek



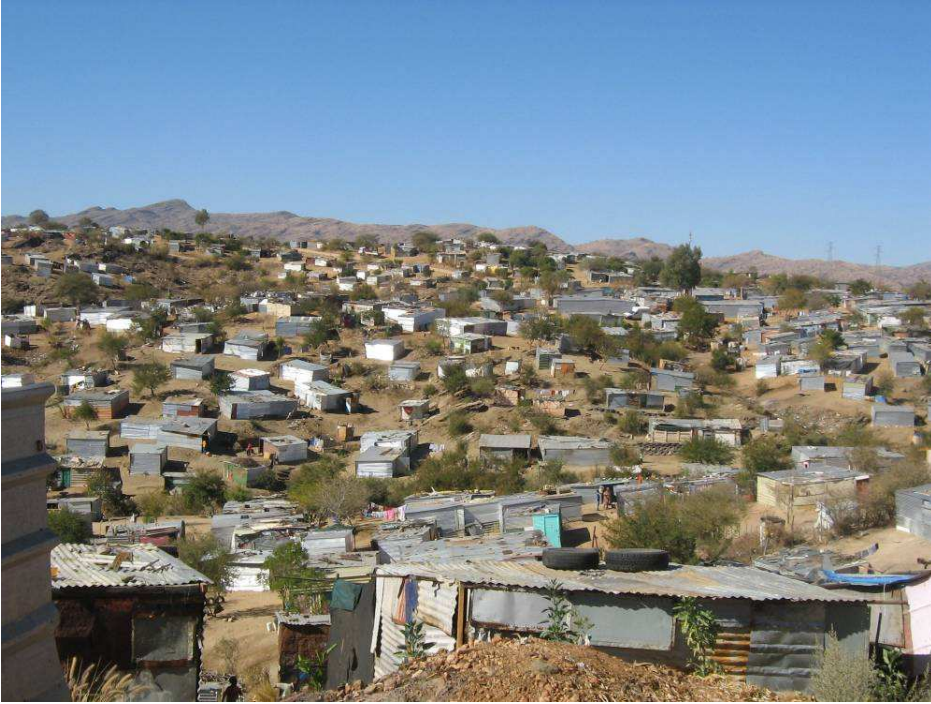
Source: Kisting, H., Sustainable Development, Windhoek Residents Profile, 2001

Figures 8 and 9. Shows the Central Business District (CBD) and Dettter Housing



Source: Aurther, Namibia, Widhoek

Figure 10. This is an image of informal settlement in Windhoek's periphery



Source: Author, Namibia, Windhoek, Onyeka no. 1, 2007

Table 7. Types of housing in Windhoek, 1996

Type of Housing	Number of Units	Total in %
Detached houses	25 405	66.8
Semi-detached houses	2 375	6.2
Flaks	2 605	6.9
Backyard flats	785	2.1
Slums(squatter units)	6 847	18.0
Total	38 017	

Source: Windhoek Municipality: Document, Windhoek Structural Plan, 1996

According to 1995 data, the shacks accommodated about 28 000 people, while the rest accommodated 150 000 people (Windhoek Municipality: Document, Windhoek Structural Plan, 1996).

Table 8. State of Housing and Land Delivery per annum, 2004

State of Housing	
Formal housing	34092 houses
Informal Housing	19694
Land Delivery Targets per annum (residential)	
High income	50 e.p.e
Medium income	300 e.pe
Ultra-low income	2600 e.p.e
Households with safe drinking water	98%

Source: Windhoek Urban Demographics (Urban Indicator 2004)

City of Windhoek, Department of Planning, Urbanization and Environment

7.2. Katutura

Definition: Meaning, no permanent dwelling or a place where we do not wish to stay (Pendleton, W., 1998, pp. 469-470).

The word Katurura, is derived from the Herero language, a language spoken by the Herero and Himaba tribes of Namibia. In respect to the Ovambo language, (a Bantu language similar to Herero language) the word is interpreted as “we have not settled yet”. In my own understanding the word is strongly incorporated with the passion of people not willing to live in an unproductive area, that they have been forced to reside in as a consequence of colonial oppression and segregation laws.

7.2.1. Katutura before

- An artificially created community in the 1950s by the South-West African administration, under the apartheid rule. *“By 1968 Windhoek and other Namibian town complied the requirement of the apartheid city model”*

(Simon D., 1996, p. 52)

- Today seen as both suburb in Windhoek.
- A place where segregation and other oppressive laws have forced people to live in Katurura by force.
- A specific area just for blacks under apartheid rule. No rights to own land, people subjects to forceful removals from place to place.
- Uncertain and hard life, people living in poverty.
- Ethnic groups were allocated in different locations with the aim to separate the nation and both on racial and tribal bases.
- Most of the land in Katutura is highly unproductive, thus making it even more difficult for the poor to survive on this particular land.

(Pendleton, W., 1998, pp 469-470)

The location as it is known today is specifically dominated by the black population. Despite independence, Katurura still remain racially segregated, though on voluntary basis. However, today Katuruta has become a home for many black Namibian populations, due to the fact that it is one of the cheapest residential locations in the city. Majority of the black

population rather feel comfortable within this location, thanks to social class structures prevailing in the location that makes it easy for the poor to adjust in, in most case it is also the reason why most migrants from rural to urban area would settle in Katutura. Meaning that it is the place where the low and middle class of the black population are found. Nevertheless, one should always keep in mind that the present phase of Katutura is a product of the colonial past.

Thus, while rigidly planned, racial segregated structures were established throughout South Africa in the early 1900s (Huchzermeyer, M., 2004,pp.83-105). Due to South African policy, segregation was more concentrated in Katutura

Katutura became a home the black population of in Windhoek, and the outskirts of the township became home for most poor migrants coming from the rural areas, mostly ending up in slums. By 1995, the population of Katutura was about 109,000 while 60,000 people were living in informal settlement. And it is within the informal settlement that the highest population had risen, after independence, there were only about 300 squatter households counted in Windhoek (Dima, S.J., et al., 2002).

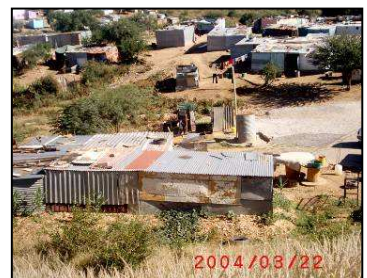
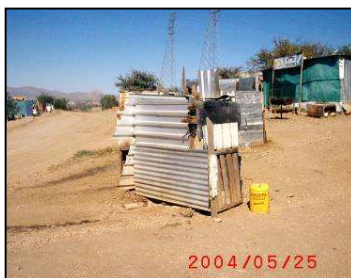
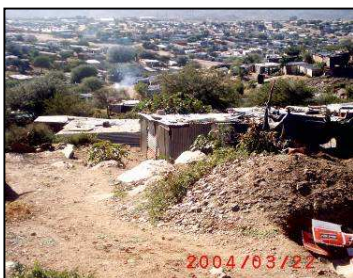
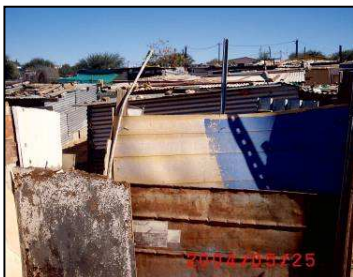
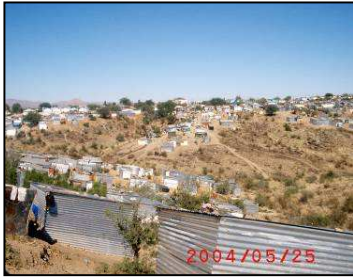
7.2.2. Katutura in present day

Presently, Katutura provides a common pride for all black people of Namibia regardless of their income or status and ethnicity, mainly those living in this location. The most common geographic manifestation of this place still remains the common social space inhabited by blacks of all tribes and social classes. For such a reason, Katutura is sometime referred to as “the black township”. Though, previously most houses in this township were of similar structures and quality, whilst today thanks to changes and better opportunities given to people, the location had grown into a place with improved formal houses. Today, about 82% of total housing remains rental properties, half of it is privately owned, thus making it difficult for new comers to obtain cheaper houses (The Namibian Newspaper, March 2008). General understanding of the geographical location and its features had slightly been interpreted differently from its original. Meaning that in present day it is considered as a location in the northern and northwestern part of Windhoek. However, it has grown vastly than it was before in comparison to its actual size and layout. Nonetheless, the increase of in-migration in Katutura has made it the prime destination for most poor people in Namibia migrating from all corners of the country.

Some few facts about present Katutura:

- It is the place where half of the population of Windhoek live in, mainly in the northern and northwestern part of Windhoek.
- Since 1991, it has remained the main destination for growing number of migrants from rural area, as wells as those still returning from exile.
- Katutura, just like in the past, still remains the place where majority of people in Windhoek are living in poverty endorsed by high rate of uneven distribution of income, access to resources, and poor services.
- Due to current existing situation, street children remain one of the major concern in Windhoek, Katutura.
- It is the place with high percentage of unemployed people, and most activities of informal economy are taking place.
- Due to rapid urbanization and increasing economic stratification, Katurura is predicted to face the same dilemmas that now confront other metropolitan communities in other African cities, if something is not done in handling the existing problems (Pendleton, W., 1998, pp. 469-470).

Figures 11: Informal settlements in Katutura



Source: City of Windhoek, Department of Planning, Urbanization and Environment, 2004

7.2.3. Choosing a location of stay

With more rights and freedom, there is less restriction to movement within the country, thus people are left with more alternative and choice to live wherever they please to reside. In a way, it enables people to squatter on any available land as most people strongly believe that it is their right to acquire their ancestral land.

The notion and the feeling that privately owned land was illegally obtained from the indigenous people, drives more people to occupy even privately owned land. Though the government is trying to resolve the issue of land distribution to the poor through the new policy of 1991 ("willing seller-willing buyer") basis. Through this policy the government has taken on steps to purchase farms, in order to resettle farmers from communal areas.

However, still many feel that the government is not trying hard enough, and the poor feel they are being left out in terms of affordability. However, most people would rather settle on municipal land. Despite the fact that according to the Habitat Agenda in Istanbul, It has been generally agreed that forced represents a dimension of urban violence, and in 1996, all governments agreed to end illegal eviction (UN-Habitat, the challenge of slums, 2003., pp. 104).

For most migrants, it has never been a difficult decision to choose a place to stay in Windhoek, since in a way it has already been formulated during the apartheid era, as mentioned before in the above chapters.

Most migrants coming from rural areas make up about 80% of settlers in Katurura, mainly because it is the ideal place suiting their social status and its where majority of the poor reside.

Although Katurura today is no more a segregated suburb as it was before, in a sense it has kept its old phase as we see different people of various tribes rather residing in the same location more dominated by their own tribe. As Cohen emphasizes to on similar issues, *"People reach out to the habitual, to the communities where they find familiar faces, voices, sounds, smell, taste and places. Confronted by the space of globalization they often need ethnicity more not less. Confused by the effects of post-modernity, relativism and the deconstruction of their known world, they re-affirm and reify what they believe to be true. For many people, ethnic ties are a matter of loyalty, of pride, of location, of belonging, of*

refuge, of identity, trust, acceptance and security”(Cohen-Modernity, chapter 19- Identity and Belonging, pp. 342).

8. Implications of life with in informal settlement (hygiene, unemployment, crime)

8.1. Life in slums

Large number of people living in the informal settlement, evidently struggle to cope with the present conditions. For instance most Namibians living within informal settlement hardly earn N\$ 640 per month (USD 90) (City of Windhoek, Department of Sustainable Development, 2002). This harsh financial situation faced by a vast majority of the poor has made it difficult and impossible for households to survive in slums.

Though, in some location there are few services provide, not all can afford to pay for it. Due to these financial constrains, families can not afford to provide their basic needs , not because they have chosen to, but because the current systems had made it difficult even for those trying hard to improve their existing situation.

Most of the poor either come from the northern part of the country (mainly the villages), or were former ex-combatants, or “returnees”. Moreover, majority of this people, especially those from villages had no or lack basic education and skills, and this makes finding a job for this people indeed it has become a challenge especially in a newly independent country like Namibia that is trying to find its way to development and dealing with the issue of poverty. Living in squatter for many people means living in filthy environmental and bad housing conditions.

People living in informal settlement are actually live in hazardous environment in many perspectives. Health conditions provided by type of environment they live in is just as hazardous as anywhere else.

Maintaining one's health has become a battle for many as they cannot afford the risk of not being able to cater for themselves, however, the case of HIV/AIDS that mostly prevails among these people, worsens the situation with the working force being mostly affected. By trying to provide for their families, however, the conditions they live in make the situation very difficult for the households. Indeed, they are faced with many challenges, and with little or no earnings as stated above. Having a decent life and proper shelter is simply a luxury for most, rather than a necessity. In regard to this case for many the only alternative left with is life in the slum, which somehow is the only "affordable" option.

"Slums function as self-contained cities. Were you can buy almost "everything"
(Berner, E., lecture, oral information: UPA, 17-28 March, 2008)

People have no access to basic medical services, not because it is far from reach, but because they can not afford it. As a matter of fact, urban areas in developing world tend to have best services provided, and this is definitely the case of Windhoek, at the same time one can get almost anything or the kind of service you think of. For example, a recent case in Windhoek, (2008) of a snake bite suffered by a six-month toddler that was rushed by her desperate poor mother from informal settlement areas to the hospital. The mother and her toddler, though found in disparate critical situation such as a snake bite, still were not given the immediate medical attention, but were instead told to wait, and as consequence her baby ended up dying in her arms (The Namibian Newspaper, March 2008). As a matter of fact, this is just one example of many ways in which the poor are being mistreated.

Above all, a large number of people live in fear of being evicted as they have no form of legal protection that would protect their household. Sometime due corruption that is connected with housing officials, they are evicted in order to make way for new government housing project and private developers. Unfortunately, a case like that never really makes any difference, because in most cases those evicted from one place simply relocate to another place.

One peculiar thing common to most slum dwellers as I have observed, they hold a common communal sense as strategy of surviving. For instance, they help one another when one is in need at times. In my opinion, most probably, one has no other alternative but to be helpful, since the conditions they all live in are of a risky nature in many ways. Meaning, helping a neighbor today could grant help in time of need.

During the practical field about eight locations were studied and almost each suburb had about 400 households that have been registered with no electricity, but surviving on gas and paraffin for energy.

8. 2. Access to public facilities

One of the main problems for people living with the informal settlement is access to public facilities and services provide by respective governments. Though in general, urban areas present an image of better life to, still majorities of the poor remain outside the bulk of these services.

One very example is the access to water, water remains one the very basic need in human life, but still about 1.2 billion people in the world have no access to safe drinking water, while some 2.3 billion of the world's population have to live without basic sanitation. These conditions contribute to many related health problems, mainly in developing world. As a result of these prevailing conditions in developing world, improving access to water for the most vulnerable have become one of the UN Millennium Development Goals (UN, 2007). The aim of UN is to reduce the number of people without access to water by half , before the year 2025.

Just like in many other cities in developing countries, these conditions, is not an exception for Windhoek, most of the informal settlements in *Katurura* lack proper basic services, such as sewage, water and electricity and refuse collection.

However, The CoW, is trying to provide access to water for majority of the low-income groups, especially those within informal settlement areas by providing and installing communal taps, and maintaining the walking distance at least less than 200m. This had been the rule specified by National Housing Policy (NHP) as part of the cities development and upgrading strategy (City of Windhoek, Department of Planning , Urbanization and Development, 2006).

According to my observation during the practical field work commonly used communal water systems in Windhoek work on two different bases:

1. Whereby an individual (selected by the community) is held responsible for a certain water point, at the same time this person is held responsible for collecting money generated from the water supply to the given community.
2. Individuals within the informal settlements are required to purchase a pre-paid electronic water card that has to be charged always before obtaining water. This card works in a way that one has to slot it in the communal tap reader (figure.13).

The first method had proven to be less effective and time consuming for people as they had to rely on availability of the person responsible and at the same time have to wait long queue. This system has its complications, and comes with lots of problems, thus making it ineffective. One example I have encountered with this system during the practical work is that of a lady that was responsible for collecting money for water but she ended up using the money for her personal use. When asked why she had done so, she claimed that during that time she was in need of the money and she intended to return it back as soon as possible. At the same time with this system a lot of water ended up being wasted, since the taps are not always closed properly, thus leading to huge amount of water wasted, when left running by irresponsible people.

The second system is new and the city is trying to extend it. The municipality of Windhoek had come up with this new system of access to water with prepaid electronic cards, to insure that the water used is paid for to avoid misuse of the water and complication that comes with management (City of Windhoek, Department of Planning , Urbanization and Development, 2007).

At the same time it is very important to point out that the fact that there has been water point made available within the informal settlements, does not necessarily mean that all people have the access to water. At some point the price is expensive and the very poor can hardly afford it

Polluted water poses threat to health of people within informal settlement especially kids that would normally play around it (Satterthwaite, D., Tacoli, C., 2003. p 49).

Table 9 . Sources of water, 2001

Source of Water		
	Private piped	75.4%
	Public piped	20.5%
	Other	3.2%
Distance to Water		
	0	77.2%
	1-100	16.7%
	>100	5.3%

Source: City of Windhoek, Department of Planning , Urbanization and Development, 2001

About a 52% of resident have access to private flush toilets. Another 26% share flush facilities, while 18.7 of Windhoek resident % use bushes top relive themselves

A large number of people again are forced to use the same toilets that are hardly well maintained. For this reason, most of the people had claimed to prefer using the bush for safety reasons. During an interview when asked to emphasis more on the use of the toilets, a lady above the age of 24 had mentioned that “ *in most cases you find feces and dirt in the toilets, she further explains that its even hard to stand in the toilet, and unhealthy, we prefer the bush*” .

Figure 12 and 13. Communal and magnetic water points



Source: Aurther, Namibian, Windhoek, Katutura- taken in suburb Onyija no.1, 2007



Source: Author, Namibian, Windhoek, Katutura- taken in suburb Onyija no.1, 2007

Refuse removal

Although refuse removal is serviced by the CoW, still the costs are not fully recovered, thus communities are asked to participate in payments partially for services received. Different informal settlement in Windhokek, Katutura are provided with refuse services such as self-containment, collection by contractors, or open space cleaning by private contractors depending on accessibility of terrain.

Figure 14. Refuse removals



Source. Author, Katutura, Onyeka no.1

Electricity

The CoW, does not provide any form of lighting or electricity to services level 1 to 3, due to low affordability. Provision of any form of electrical services is only considered in upgraded communities, however, only when the entire community can afford such additional services. Though one would expect that within informal settlements, people would have no electricity it came as no surprise to find out that most of the households have electricity connection running from formal household to informal households illegally. However, when asked about the form of energy they used, most households had indicated that they have no electricity, but rather use paraffin, wood and candles for energy.

Suggestion

The water should be controlled by the governments, and they should set up effective programs of development. At the same time, there should be sufficient investment in water research. As for the refuse removals, the communities should be encouraged to keep their locations lean by providing more refusal containers in short distance and community participation in cleaning. To do these campaigns, there is a need of effective community programs to be put in place that would keep the communities informed about health standards and all hazards that comes with filthy environment.

9. Current government programs and international organizations

9.1. Government and International Assistance

In order to deal with the increasing number of informal settlement and poverty in the country, and to meet the demand for proper housing, the Government of Republic Namibia (GRN) adopted a Decentralization Policy right after independence as an approach to provide services from central government to local government throughout the country.

The Decentralization Policy, came in under the constitution of the Republic of Namibia, and was approved in July 1991 as a National Housing Policy (NHP). By this, the GRN committed its self to carrying out necessary and effective way through Poverty Monitoring Strategy (PMS), by trying to budget finances ahead. However, finance had always been constrain for implementing many governmental programs. Currently the main source for funding PMS is the UNDP and GRN. Help is also coming from the multilateral and bilateral agencies, like EC, Swedish International Development Cooperation Agency (SIDA), the German Agency for Technical Cooperation (GTZ), and USD (Hon., Ngatjizeko, I., 2004, p.6-34).

At local level, different governmental and Non Governmental Organizations (NGOs) agencies are operating within the informal settlements while assisting and combating poverty, such as the Namibian Housing Action Group(NHAG), the Shack Dwellers Federation of Namibia(SDFN), the Ministry of Regional Local Government, Housing and Rural Development (MRLGHRD). Through these programs the governments

identifies four priority areas of the country's development- health, education, human settlement and agriculture. The German government as well makes effort in assisting financially as form of reparation for what has been done in the past by German colonial rule in Namibia.

To cope with the housing crises the MRLGHRD formulated a strategic plan for guiding the government through Build Together Housing Shames (BTHS) that incorporates four sub-programs, this includes Social Housing, Single Quarters Upgrading, Informal Settlement Upgrading and as well as providing Urban/Rural Housing Loan (MRLGHRD,2002, pp.1-3).

9.2. Making a difference

One of the biggest challenges in informal settlement is the low affordability of housing among communities. Though, CoW has the necessary strategies and skills in place to provide long term solutions, these solutions are very costly and if no financial assistance is forthcoming the City will not be in a position to meet the challenges of informal settlements in a sustainable manner.

During the year 2000, the City of Windhoek adopted a Development Upgrading Strategy (DUS) plan. This plan is the guideline document of the City on its upgrading projects within informal settlement areas. At the same time, DUS is used as a guideline program for understanding and explaining different services at various level and tenure options to the communities. The implications of different service levels are numbered from stage 1 to 3 in terms of cost, maintenance and future upgrading. The guidelines of the document are demonstrated and expected to be clearly explained and understood by residents of different community groups.

The guideline project outlines three interdependent stages used in upgrading informal settlements:

- **Stage 1.** In this stage consultant are to determine level of services and tenure options that has to be provided in an informal settlement in terms of what residents need are and their affordability, and design the layout plan accordingly. In accordance with these terms of reference layout plan is

designed and drawn up as determined according to given parameters mentioned above.

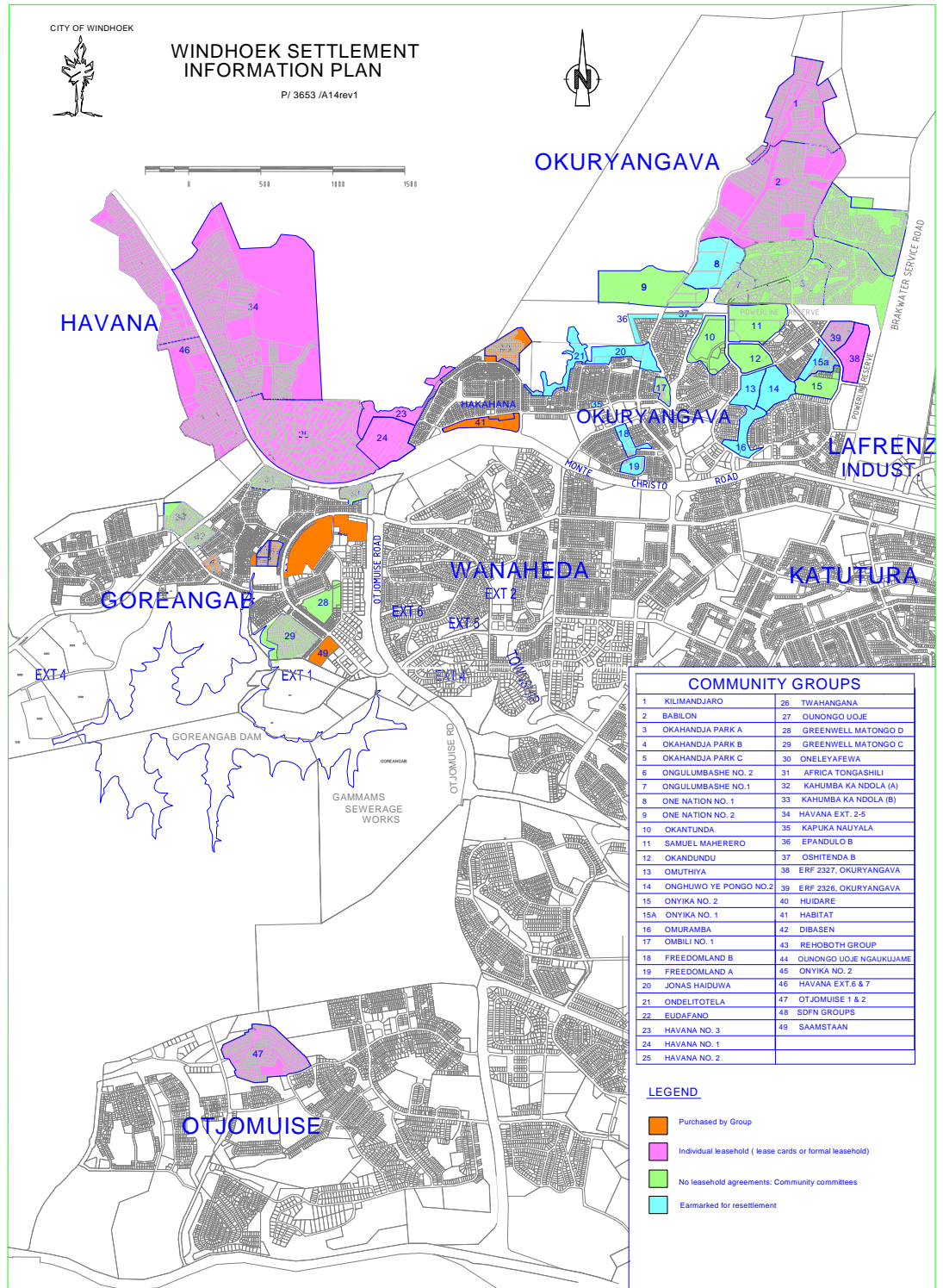
- **Stage 2.** In stage 2, approval of layout and a detailed design of the infrastructure services to the levels determined in the first stage and the compilation of tender document for the actual construction in Stage 3.
- **Stage 3.** This is the stage where actual construction of informal settlements start taking place.

The Scope of Services, for consulting services in upgrading of informal settlement in CoW provides general guidelines of what is expected for consultants in the project.

(City of Windhoek: Document, Local Tender Board, General Scope of Services, 2007)

Since the year 2001 the City had managed to upgrade a large number of informal settlement area in Windhoek basin.

Appendix 1. Community Groups



The figure above, outlines different community groups living within the informal settlements in Windhoek. The community groups are further categorized into three main community groups:

1. The Resettlement Area, indicated in blue
2. Upgrading Area, indicated in green
3. Self-Help Upgrading Area, indicated in yellow

Resettlement Area: This are the groups found around unfavorable topographical conditions, such as steep slopes and areas with potential flood dangers. Sometimes found in densities, or places were sites are rather preferred for other use such as schools. Basically these groups are to be relocated (City of Windhoek, Department of Planning, Urbanization and Development, 2007).

Upgrading Area: By Upgrading Area, we talking of groups where City Upgrading Project (CUP) is being currently implemented. Most of the projects were completed in 2003, and new upgrading for the following years is to follow up (City of Windhoek: Department of Planning, Urbanization and Development, Informal Settlement Groups Status, 2007).

Self-Help Upgrading Area: These are mainly the groups indicated in yellow on the map above, where upgrading is mainly possible with less complications in regard to previous groups (groups that might be already upgraded, but with complications), but no upgrading has been done due to the fact that CoW has no capacity or funds to undertake the upgrading (City of Windhoek, Department of Planning , Urbanization and Development,2007). Nevertheless, the City encourages communities groups to try upgrading themselves.

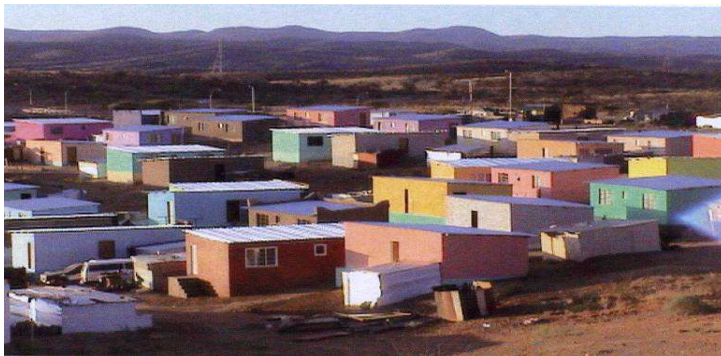
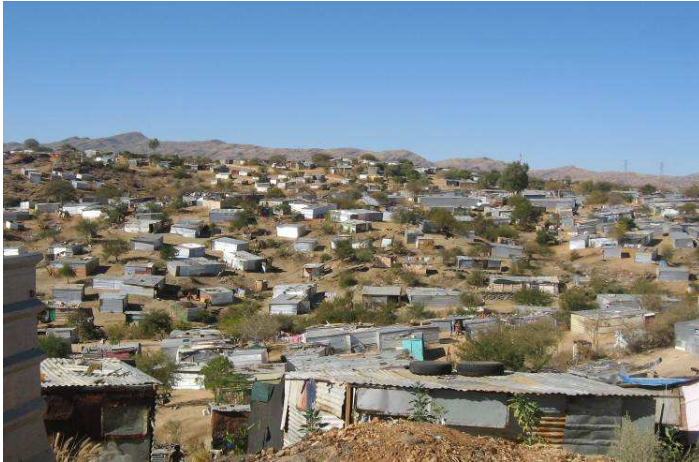
Table 10. Upgrading project of 2000-2004

Project	Period	Number of Households Benefiting	Households earmarked for relocation
Havana Ex1 Upgrading	2000-2004	1300	240
Okajanda Park A,B,C	2000-2004	910	300
Ongulumbashe Upgrading	2001-2004	640	20
Otjomuise 10 and 11	2001-2004	1047	0
Otjomuise 8 and 9	2001-2004	1414	0
Otjomuise 6 and 7	2004-2004	890	0
Total		6,201	560

Source: City of Windhoek, Department of Planning and Environment,

Division of Sustainable Development-Upgrading project from 2000-2004, modified

Figure 15. Shows and upgraded houses for people with in informal settlements



Source: City of Windhoek, Department of Planning, Urbanization and Development, 200

Other different ways through which the CoW deals with upgrading informal settlement is through Development Upgrading Strategy (DUS). In accordance with this strategy, the CoW uses two ways of developing land for the poor, the **In-Situ Upgrading** and **New Land Development** (also know as the **Greenfeild**).

1. **In-situ upgrading:** This is any kind of upgrading, or improvement of a community's living conditions on the site where is already settled. At the same time, it provides services and subdivisions for individual ownership.
2. **New land development** (the **Greenfeild**): This kind of program provides services only to land that has not been settled yet prior to people's arrival.

Meaning that the land is first serviced and then people are allowed to move to their newly upgraded place.

By services in this case we mean toilets, water taps and roads are being provided or upgraded (City of Windhoek: Department of Sustainable Planning, Urbanization and Environment: Informal Settlement Groups Status, 2007).

9.3. The city response to Informal settlement

The CoW made several responses to the challenges presented by informal settlements. The major programs are contained in the document of the Development Upgrading Strategy emphasized above, that deals with the challenges presented within the informal settlement, especially that of uncontrolled invasion of lands. The task has been given to different institutions, such as The Divisions of Sustainable Development, Housing and Properties in conjunction with the Community Development Division (CDD) of the Department of Economy and Community Development (DECD) are tasked with the upgrading and management of the informal settlements on the outskirts of the city. These divisions are faced with an enormous task of registering, reorganization and relocation of households in the informal settlements.

Though different areas had been identified for upgrading still it remains very difficult for the city to control the movement within the informal settlement as some households turn to move to locations that had been identified for development. Besides, counting households remains challenging since they are fluid.

According to the documents provided by the CoW, the city still rely on old statistic data from 1991-2001 to inform policies on informal settlement management.

During my recent field work, I had the chance to take part in the household registration process whereby students were given the task of numbering houses and registering households according to the given questionnaire handed out by CoW (Appendix 2), we interviewed people in different locations (the information recorded during the year 2007 has not yet been finalized, for this reason I can not display the data and information collected in this thesis).

Besides registering household, according to different locations we had to find out and point out the needs of various communities. Personally have to point out that getting data from households was rather complicated and time consuming, since most of the time people were not available or refuse for some reason to give accurate data. Probably this was due to the fact that many people were not well informed about the project (as some would have claimed), and on the other hand, the survey was carried out during the working days and hours, when most of households owners were not present because they were at work, or had been out running their small scale businesses.

Above all in the process of marking houses and registering households, we noticed that some of them had been previously marked, however, with the system that is similar to that currently in use. This has made it very difficult to identify the households that have been marked or unmarked before. Again the kind of “spray” used for numbering and identifying houses can be bought by anyone, thus for sure making it easy for people to remark their houses in order to get moved to the new upgraded locations, though they were not registered relocation. This again in way complicates the situation for those that were aimed for relocation.

Though currently, there had been a rough registration of all informal settlements in Windhoek with proposed permanent marking system and a certificate of proof of registration for each kambashus (slum), still, managing the growth of informal settlements remains critical, since there are hardly fresh information available concerning the total housing needs of the City and the dynamics of informal settlements. It is recommended that a new unique and compulsory registration process is required if the City wants to properly manage its informal settlements. Further more, all structures need to be registered as opposed to households to ensure that the City is informed about the actual housing need of the poor(City of Windhoek, Department of Planning , Urbanization and Development, 2006).

A proposal was made to make a household registration database system based on the type that will correspond with the permanent marking. It is also suggested that permanent marking should be done on durable material, to avoid fading of paint and protection from rain. It is also recommended that the municipality uses for informal settlement a system similar to that used by National Housing Enterprise (NHE) for

numbering formal households. It was proposed that consultants be appointed to monitor the complete registration and marking of all households in the informal areas and to ensure that a proper database and registration system together with appropriate procedures are developed. And that it should be implemented and made compulsory for all shacks erected within the Windhoek basin be registered and marked on a continuous basis. The CoW believes that, this perhaps would create a perception of control within the informal settlements and discourage invaders (City of Windhoek, Department of Planning , Urbanization and Development, 2006).

9.4. The Land Issues

In 1991, a conference was held in Namibia concerning the land issues, and several decisions were made concerning redistribution of land to the poor. On the basis of this conference the government adopted the strategy of “**willing seller-willing buyer**” principal. According to this principle the government would normally purchase farm lands from the farmers and redistribute them by selling to the less privileged. However, only few people are able to buy farms or land at given commercial prices, and majority of the poor can hardly afford. This means that the poor people are not benefiting from this program.

At the same time, this program has its constrain. For example, some of the farms identified for redistribution are scattered throughout the country, and that however, limits the options for land reform (Windhoek Municipal Council: Department of Sustainable Development Environment, 2006),

.On the other hand, though Namibia is relatively a big country, its desert like conditions make the situation even more complicated, since most of the land in the country due to climate conditions is not favorable for arable agricultural.

Even though access to land remains an important factor in Namibia, lack of urgency to solve land issues proves that the government does not consider it as a priority (Tapscott, Chris., 1994, p.12).

Lack of government’s interest to solve housing crisis and land related problems of the poor resulted in cases where people started illegally invading of land, mainly in Windhoek basin as it has been stated before. Though, the city had been able to control the land invasion

situation for the last 3years, after the 2004 election just before the local council election things had gone out of hand and land invasion had been increasing beyond control.

The fact remains that despite all its effort, land capacity in Windhoek can not accommodate the large number of population that might flow in from the rural area and small towns. It has been estimated that by the year 2016 the city will run out of land supply (City of Windhoek, Department of Planning , Urbanization and Development, 2003).

Most informal settlement occupied lands are either municipal or council land, or land in mandate of traditional authority. Households that are settled on municipal land are there temporarily and no agreements are signed (Tapscott, C., 1993, p.36). However the city requires all members of households to have an agreement with the municipality. This apparently should assist the municipality in providing better services to different communities.

According to 2004-2005 municipal data, high demand for land proves that still more households are on a waiting list for Ervin (the word Ervin in Namibia refers land blocks)(table11). The land demand includes groups and individuals registered for purchase and land invaders identified for resettlement (City of Windhoek, Department of Planning , Urbanization and Development,2006).

Table 11. Households residing in area earmarked for resettlement 2004/2005

Households with high demand for land and adequate services		
Note: number of HH enlisted below is a manual count of informal structures-map; and thus, due to rapid urban growth - these figures are subject to changes.		
Name of Informal settlement	Informal settlement	Households
Ebandulo B	36	108
Freedomland A	19	110
Freedomland B	18	160
Jonas Hainduwa	20	313
Kapuka Nauyala	35	42
Omuramba	16	140
Omuthiya	13	201
Ondelitotela	21	284
One nation No.1	8	358
Onghuwo ye pongo No.2	14	325
Onyika No.1	15A	76
Oshitenda B	37	58
Total		2175
Population estimated 3.8 Average	(Overall population estimation)	8265
Population estimated 5.7 Average	For informal population estimation	12397.5

Source: City of Windhoek, Department of Planning, Urbanization and Development, 2004, 2005, modified

9.5. Land Supply

Since 2000 to 2005 the City managed to develop more than 4399 Greenfield sites for the poor and ultra poor residents. From the total of 4399, about 194 sites were in development level 1, while 1926 in development level 2, only 92 in Development level 3 and 437 in development level 5.

In upgrading projects the City has completed 3 major projects namely Havana Ext. 1, Okhandja Park ABC, and Ongulumbashe where by more than 2800 households benefited. Altogether more than 7 200 households are said to have benefited from the low income land development program of the City, accommodating about 28000 people with an average of 4 people per household.

Currently Projects in progress are *Havana 6* and *7* for Greenfield developments, *Havana Proper* for in-situ upgrading, and *Greenwell Matongo C*, a community development project. On Greenfield sites more than 600 households will be accommodated in *Havana 6* and *7*, in *Havana Proper* 700 households will benefit, while in *Greenwell Matongo C*, about 500 households will benefit.

In the coming years, land development projects on Greenfield sites for informal settlement upgrading would be planned for: Otjomuise 10 – 11 (Greenfield, 600 erven) and One Nation 1 and 2 (Upgrading approx 1000 households).

On a long term, till 2010 the City plans to continue in developing Otjomuise 12-13 and upgrading the smaller informal settlements under future upgrading projects. However, it is currently believed that once Otjomuise is fully developed, only Goreangab Extension 4 would remain, and no land would be available to accommodate the Cities low and ultra-low income groups. Additional land is required for the resettlement of new informal settlements under the “Projects Earmarked for Resettlement” (a document dealing with new informal settlement, mostly households that were build after the year 2005-2006).

In 2004, a study was carried out to evaluate the feasibility of lands in the north of Havana to accommodate low income groups. Unfortunately, during the study it was found that the cost of developing the land would make it unaffordable to designated groups.

Due to the fact that land identification for low income groups is a complicated and challenging task, the City would have to start now with the identification of the next developmental areas to accommodate low income groups beyond 2010 (City of Windhoek, Department of Sustainable Development, 2007).

Budgetary Provisions

During the year of 2005-2006, *“About N\$23 million was spent in some of the informal settlement, such as Havana Ext. 1, Okahandja Park ABC and Ongulumbashe upgrading projects. These three projects together benefited 2850 households at an average cost of N\$8000 per household. These costs exclude the cost of relocating and accommodating overflow households”*.

Further it is argued that, for CoW to accommodate more than 8400 households it will cost an additional N\$67 million with an average cost of N\$8000 per household, since the high cost of accommodating informal households created problems resulting in high debts in upgrading informal areas running into several millions on municipal accounts. At the same time the city is left stranded with low repayment accompanied with high cost spent on accommodating households, that makes upgrading of informal settlements very challenging, thus creating the question of long-term financial sustainability. (City of Windhoek, Department of Planning, Urbanization and Development, 2006).

10. Potential changes

10.1. In light of the above it is recommended:

- 1) That the Country at large and the CoW takes note of the challenges presented by the growth in an uncontrolled informal settlement.
- 2) That at national level poverty monitoring systems are promoted with information gathering and consulted between different institution at regional level and national level, and assessed on monthly bases in order to keep track the situation in the country and affective coordination.
- 3) A need for a detailed study of poverty situation in the country with agent attention. Investigating the causes of poverty, from the on to proceed in assessing the problem affectively.
- 4) That the CoW continues to annually review its responses to the informal settlement challenges to ensure that maximum benefit delivered with minimum effort.
- 5) That the informal settlement committee continues to exist and meet on a monthly basis to discuss and coordinate the plans and activities of the different departments.
- 6) That each department and institutions responsible for monitoring informal settlement and poverty, submits a strategy and annual plan of action to the Informal Settlement Committee specifically focusing on improving the living conditions of the informal settlements.
- 7) That the CoW invites tenders for registration and marking of all shacks within the informal settlements.
- 8) It is important that the cities make it compulsory for all shacks to be registered
- 9) That money should be budgeted as soon as possible to conduct a study on the identification of land to accommodate the City's poor beyond 2010.

11. Conclusion

Though Namibia is among the least populated nations of the world, the fast rate of urbanization in the country is one of the contributing factors leading to increase of slums just like anywhere else in the world, resulting in an increase in number of households living within informal settlements. The fact that Namibia is a least populated country, should serve as an example at global level that if a state fails to provide and deliver services to a small population, one turns to wonder who the government intend to solve poverty and habitat situation in the country in its present increasing rate. For this reason and many, I believe that its high time for the government of Namibia to take matters more seriously.

Though informal settlement management and control presents challenges to City of Windhoek, and other major towns in the country, again should be the reason to consider it as critical. However, management and controls should be dynamic. Defying an application of one common forward solution can be a challenging task as it is at present.

Providing an overview of the informal settlements in Namibia and pointing out the issues that contributed to current growth of poverty and increasing number of informal settlement in line with migration process in the country somehow is a complicated task to carry out, due to lack of availability of information, reliability of available information and data accuracy. The situation within the informal settlement mainly that of the City of Windhoek remains critical compared to other cities as it has been stated within this work. Nevertheless, I have come realize that the case of informal settlement is more of a complex situation that requires more detailed studies. Perhaps, more comparative studies would help the local authorities to address the problems around urban settlement and its prevailing poverty among those less privileged. It is recommended that consultation among different sectors of the government and organization is of great importance in order to improve public service delivery, which is currently in critical situation.

Indeed, Namibia is a young democratic country; those should be the reason and driving force for the leaders to be more enthusiastic in assessing current matters in the country. They ought to learn from older democratic nations, and prevent mistakes made in the past in regard to poverty and housing the poor.

Transparency in land administration and reforms is of great importance in, and would only assist the poor. Moreover, there is a need to implement social programs for the poor.

On a global level, respect for all basic human need, right and dignity of all people should be the key, and driving force for social, political and economic change, in order to tackle the poverty situation and the housing problem for the poor. Deepening the current existing problems in developing countries, for example, as cutting on basic needs is not the way forward.

Resume (in Czech language)

Přesto, že Namíbie spadá mezi země s nízkým počtem obyvatelstva na světě, neznamená to, že problematika urbanizace v zemi není v kritické situaci a tudíž by neměla být ignorována. Rychlý počet urbanizace v zemi je jedním z faktorů, který vede ke zvýšenému a neustále narůstajícím počtu domácnosti ve slumech ,oficiálně v Namíbii zvané informal settlement. A právě to, že tato země disponuje nízkým počtem obyvatel by měl být důvodem obavy a poučení v globálním měřítku , že pokud stát selhává a ignoruje řešení problému v „malém měřítku“ pak otázkou zůstává, jak je hodlá řešit ve větším měřítku (v tomto případě zvýšení problematiky chudoby a bydlení při nárůstu počtu chudých).

Management a kontrola nárůstu slumů v Namíbii představuje výzvu pro stát, především v hlavním městě Windhoeku, kde je situace kritická v porovnání s ostatními městy. Přesto, že se město snaží implementovat mechanismy kontroly k tomuto fenomenu/případu, mělo by být bráno na vědomí, že tento mechanismus by měl být dynamický. Prosazování jednosměrného řešení nevede k dlouhodobým řešením, jelikož se jedná o komplikovanou a dynamickou situaci.

Jak jsme již zjistili během této práce, obecná problematika chudoby v Namíbie, která dodnes přetrvává a vede ke zvýšené nedostupnosti k adekvátnímu důstojnému bydlení, má své počátky v koloniální éře v této zemi a neochotě efektivně řešit přetrvávající problémy a problematiku slumů(informal settlements) Namibické vlády. Právě proto by při řešení této problematiky měli být brány do úvahy i historické fakty společně s vizi, kterou si tento stát chce do budoucna vybudovat.

Nicméně, zpracování přehledné kompilace tohoto tématu a poskytování informací ohledně různých příčin, které přímo či nepřímo napomohli ke zvýšení chudoby a nárůstu slumů v hlavním městě bylo poněkud/poměrně obtížné z důsledku nedostatku přístupných zdrojů a spolehlivosti zdrojů a dat. Většina informací je dostupná pouze v Namíbii na Ministerstvu pro Regionální lokální a vládní bydlení (Ministry of Regional Local Government and Housing) a na městském úřadu ve Windhoeku v oddělení pro Trvalý a udržitelný rozvoj a environment (Department of Sustainable Development and Environment). Důvodem nedostatku materiálu může být fakt, že Namíbie je poměrně mladým demokratickým státem, který nedávno získal svou nezávislost a to v roce 1990. Další důvodem je to, že z doby koloniální éry nebyli zapsané či nejsou dostupné informace, které by mohli napomoci odstínit situaci chodu země či migraci, která napomohla urbanizaci.

Během zpracování této práce jsem poznala, jak komplexní a komplikovaná je situace ve slumech a jakou si vyžaduje vysokou pozornost. Na základě toho navrhuji, že je třeba víc a detailně prostudovat tuto problematiku. Věřím, že víc komparativních studií by mohlo napomoci vládě do budoucna efektivněji řešit problematiku chodu a bydlení pro chudší vrstvy v zemi. Zároveň vyžaduje bližší spolupráci mezi ústředními vládními sektory a širší veřejnosti z různých sfér, pokud má být zlepšena veřejná služba.

Kromě toho by měl být pro představitele státu hnacím motorem fakt, že je Namíbie mladým demokratickým státem a měli by se učit od starších demokracií, které úspěšně zdolaly podobné problematiky. Namíbie by měla demonstrovat úspěch nového státu na Africkém kontinentu, a tak předejit zbytečným chybám.

V globálním měřítku může Namíbie tak jako jiné státy v rozvojových zemích dosáhnout úspěchu, pokud budou respektovány základní lidské potřeby. Svoboda, důstojnost, právo a respekt všech lidí by měli být klíčem pro zlepšení sociální, politické a ekonomické změny na světě. Prohloubení současných problémů v rozvojových zemích skrze neo-liberální politiku, zřejmě nikam nevede ani není udržitelné.

.

Appendix 2:

This survey seeks to establish the socio-economic profile as well as community needs that will contribute to the development of informal settlements database and policy to improve the rendering of services to informal settlements in the City of Windhoek.

TO BE COMPLETED BY INTERVIEWER

NAME OF INTERVIEWER

SIGNATURE & DATE OF INTERVIEW

COMMENTS:

SECTION A: GENERAL

Identification of household

NAME OF THE CONSTITUENCY _____

NAME OF THE AREA _____

ERF NO (if any)

NAME OF HOUSEHOLD HEAD _____

P.O. BOX NUMBER _____

TEL /CELL:

SECTION B							
Household and income information							
	NAME		SEX		AGE	EMPLOYMENT	MONTHLY INCOME
	HEAD OF DEPARTMENT	ID NUMBER	M	F			
1							
	SPOUSE						
2	ID NUMBER						
	MARITAL STATUS	SINGLE	MARRIED		MARRIED COMMON LAW (TRADITIONAL/ PARTNER)		

OTHER OCCUPANTS								
	NAME	RELATION TO THE HEAD OF HOUSE	SEX		AGE	EMPLOYMENT (SCHOLAR – PRE-SCHOOL OR STUDENT OR PENSIONER)	MONTHLY INCOME	EDUCATIONAL LEVEL (NONE, PRIMARY, SECONDARY, TERTIARY)
1			M	F				
2			M	F				
3			M	F				
4			M	F				
5			M	F				
6			M	F				
7			M	F				
8			M	F				
9			M	F				
10			M	F				

SECTION B: HOUSING

Type of dwelling (house/kambashu) and (erf/site)

Type of dwelling	
1. What type of dwelling/s do you currently live in?	a) Corrugated iron (Zinc plate)
	b) Other (specify)
2. Do you own this dwelling/s?	a) Yes b) No
3. Do you belong to a Savings Scheme/Housing Group? If YES, then what is the name of the group	Yes.....No..... Group name:
4. If you are not part of a group, do you want to be part of a group?	a) Yes b) No
5. Are you aware of the “Build Together Housing Scheme”?	a) Yes b) No
6. Why did you decide to live in this area?	
7. How many years have you lived in the City (Windhoek)?	
8. What is your reason for coming to stay in the City?	
9. Where did you live before you came to the City?	
10. How many years have you lived in this settlement?	
11. How long have you lived in this house?	
12. Do you want to lease or buy land from the City?	a) Lease b) Buy
13. Do you have any other houses or land in Windhoek?	a) Yes b) No
14. If yes – Street address, erf number of this dwelling?	

SECTION C: SERVICE DELIVERY

<p>1. Which services are available to the household? (Record all that apply)</p>	<p>a) Water b) Electricity c) Sewage d) Waste removal e) Communal Toilets/Showers f) Roads/Streets</p>	
<p>2. How is refuse or garbage of this household disposed of? (Record all that apply)</p>	<p>a) Removed by the CoW at least once a week b) Removed by the CoW less often c) Communal skip container d) Throw it away e) Other (specify) _____ _____</p>	
<p>5. What type of toilet facility does the household use? (Record only the MAIN one)</p>	<p>a) Communal waterborne toilet b) Communal dry toilet c) Bush</p>	
<p>6. What type of water supply does the household use?</p>	<p>a) Communal water tap – prepaid meter b) Communal water tap –meter</p>	
<p>7. If you use communal water tap –prepaid meter, do you use:</p>	<p>a) Your own access card b) The card of a neighbour without payment c) The card of a neighbour with payment</p>	
<p>8. What type of electricity supply does the household use?</p>	<p>a) Direct connection to house b) Indirect connection from neighbour c) None</p>	
<p>10. What sources of energy do you use and what do you use it for? (Circle all that apply)</p>		
<p>Cooking</p>	<p>Heating</p>	<p>Lighting</p>
<p> </p>	<p> </p>	<p> </p>
<p> </p>	<p> </p>	<p> </p>
<p> </p>	<p> </p>	<p> </p>

SERVICES	
	<i>Bus/taxi service</i>
	<i>Kindergarten</i>
	<i>Primary school</i>
	<i>Secondary school</i>
	<i>Market</i>
	<i>Police</i>
	<i>Community centre</i>
	<i>Clinic</i>

Source: City of Windhoek-Department of Sustainable of Planning, Urbanization and Environment

Key words:

Informal Settlements, Migration, Namibia, Windhoek, Slums, Poverty

Source:

Bredley, P.N, Carter, S.E, Article (1989): Food Production and Distribution of Hunger, pp1-13

In: Johnson, R.J., Taylor P.J., A World in Crisis? Geographical Perspective: Blackwell, Oxford, 1989, pp. 101-124. ISBN-10: 0631162712, ISBN-13: 9780631162711

CIA (2008): CIA-The World Factbook – Namibia [Online]. [cit. 2008-06-15]

Available at:

<https://www.cia.gov/library/publications/the-world-factbook/geos/wa.html>

City of Windhoek, File (2002): Development and Upgrading Strategy, Workshop, 28 January (2002)

Available in: Namibia, City of Windhoek- Department of Planning, Urbanization and Environment

City of Windhoek, Document (2007): Local Tender Board, General Scope of Services.

Available in; Namibia, City of Windhoek-Department of Planning, Urbanization and Environment

Coquery-Vidrovitch, C., (1991): The process of Urbanization in Africa (From the Origins to the Beginning of Independence). In African Studies Review, Vol. 34, No.1 (1991), pp. 1-98. [cit. 2008-07-24]

Available at: <http://www.jstor.org/stable/524256>

Dalal-Clayton, B., Dent, D., Dubois, M (2003): Rural planning in developing countries. London, Earthscan, 2003. ISBN-1853839396 Paperback. ISBN 1853839388 Hardback

Davis, M., Planet of Slums. London: Verso, 2006. ISBN 1-84467-022-8

Diamond, N. K. USAID/EGAT Seminar series: Natural resources management and Poverty reduction: Case Study: Community Based Natural Resources Management in Namibia, (2004-2005).[online]. [cit. 2008-04-23]:

Available at:

www.usaid.gov/our_work/agriculture/landmanagement/poverty/namibia_case_study.pdf

Dima, S. J., Ongunmokund, A.A., Natanga, T., (2002). The Status of Urban and Peri-Urban Agriculture, Windhoek and Oshakati, Namibia, (2002).

Sandberg, K . Alcohol and Drugs in Nanibina cultural setting, Windhoek (1997)

Fisher, S., Article (2003): Globalization and Its Challenges. In. The American Review, Vol. 93, No. 2 (2003), pp. 1-30. [cit. 2008-07-22]

Available at: <http://www.jstor.org/stable/3132195>

Frayne, B., Pendleton, W., Article (2001): Migration in Namibia : Combining Micro Approaches to Research Design an Analysis. In International Migration Review. Vol. 35, No. 4 (2001), pp 1054-1085.[cit. 2007-8-21]

Available at: <http://www.jstor.org/stable/3092002>

Goldin, I., Reinert, K., Globalization for Development. A Co-publication of The World Bank. Palgrave Macmillan, New York 2007.

ISBN-10: 0-8213-6929-6, ISBN-13: 978-0-8213-6929-6

Hon., Ngatjizeko, I., Document (2004): Poverty Monitoring Strategy: Poverty Reduction and Equity Sub-division, NPCCS (2004), pp. 1-35. [cit. 2007-07-18]

Available in. Namibia, City of Windhoek-Department of Planning, Urbanizations and Environment

Note: Mr. Ngatjizeko is a director general at National Planning Commission

Huchzermeyer, M., Article (2002): Informal Settlements: Production and Intervention in Twentieth-Century Brazil and South Africa. In. Latin American Perspective. Vol. 29, No 1 (2002), pp. 83-105. [cit. 2008-07-22]

Available at: <http://www.jstor.org/stable/3185073>

Kisting.,H. Sustainable Development 2376, File (2001): Windhoek Residents Profile 2001. Available in: Namibia, City of Windhoek, Department of Planning, Urbanization and Environment

Ministry of Regional Local Government and Housing (MRLGH), Document (2002): Corporation for Housing Provision Towards Vision 2030. [cit. 2007-07-18]

Available in: Namibia, Ministry of Regional Local Government and Housing

Pendlton, W., Migration and Urban Governance in Southern Africa: The case of Windhoek. Windhoek 2002, pp. 1-20.

Available in: Namibia, City of Windhoek, Department of Planning, Urbanization and Environment

Pendleton, B., Bruce., F., (2002). Migration as Population Dynamic in Namibia.

In: Ben Fuller and Isoder Prome (eds.), Population-Development-Environment in Namibia. Laxendurg, Austria: IIASA,IR-00-031

Available in: Namibia, City of Windhoek-Department of Planning, Urbanization and Environment

Preston, R., Article (1997): Integrating Fighters after War: Reflections on Namibian Experience, 1989-1993 . In Journal of Southern African Studies, Vol. 23. No. 3, pp. 453-427.[cit.2007-08-21]

Available at: <http://www.jstor.org/stable/2637511>

Satterthwaite, D., Tacoli,C., (2003) : The Urban Part of Rural Development : The Role of Small and Intermediate Urban Centers in Regional and Rural Development and Poverty Reduction. ISBN 1843694352[online] Available at: www.iied.org

Shack Dwellers Federation of Namibia (SDFN), Document (2003-2004): Namibian Housing Action Group, Annual Report (2003-2004). [cit. 2007-07-18]

Available in: Namibia, Shack Dwellers Federation of Namibia (SDFN)

Shack Dwellers Federation of Namibia (SDFN), Document (2005-2006): Namibian Housing Action Group, Annual Report (2005-2006). [cit. 2007-07-18]

Available: Namibia, Shack Dwellers Federation of Namibia (SDFN)

Tapscott, C., Article (1993): National Reconciliation, Social Equity and Class Formation in Independent Namibia . In. Journal of Southern African Studies,

Vol.19, No.1 (1993), pp. 29-39. [cit. 2008-06-23]

Available at: www.jstor.org/stable/2636955

Tapscott, C., Article (1994): Land Reform In Namibia: Why Not?

In. Journal of Southern African Report, Vol.9, No.3 (1994), p.12. [online]. [cit. 2008-07-

23] Available at: www.africafiles.org/article.asp?ID=4015

Tvedten, I., Article (2004): A town is Just a Town: Poverty and Social relationships of Migration in Namibia. In. Canadian Journal of African studies, Vol. 38, No. 2 (2004), pp.

394-423. [online]. [cit 2008-06-23]

Available at: www.jstor.org/stable/pdfplus/4107305

UN-Habitat, Cities in Globalizing World: Global Report on Human Settlement. London, Earthscan, 2001. ISBN-185383-805-5

UN-Habitat, Financing Urban Shelter, Global Report on Human Settlement. London Earthscan, 2005

UN-Habitat, Article(2004) The Challenge of Slums: Global Report on Human Settlements.

In Population and Development Review, Vol. 30, No. 3, pp.561-561

Available at: www.jostot.org/3401430

UN-General Assembly, Report on the World Social Situation, 2005, pp. 1-152.

Available at:

<http://daccessdds.un.org/doc/UNDOC/GEN/NO5/418/73/PDF/NO541873.pdf?OpenElement>. [cit. 2008-07-19]

UN-Habitat (2003) Understanding Slums: Case study for the Global report [Online]. [cit.2008-06-15]

Available at: http://www.ucl.ac.uk/dpu-projects/Global_Report/cities/durban.htm

UN (2008): UN- Millennium Development Goals: [Online]. [cit. 2008-06-15]

Available at: <http://www.undp.org/mdg/basics.shtml>

Understanding slums: Case studies for the Global Report on Human Settlement, 2003.

Available at: www.ucl.ac.uk [cit. 2008-05-23]

UNDP, Human Development Report, 2007. [cit.2008-10-15]

Available at: www.undp.org/countries/data_sheets/cty_ds_NAM.html

